



# SECTION B

Life Expectancy and Vital Statistics

## SECTION B

### Life Expectancy and Vital Statistics

This section provided data on life expectancy, births, marriages and deaths. Tables and graphs are included on a range of parameters and contain information on changes over time, breakdowns by Health Service Executive Areas and comparisons with other EU countries.

#### Life Expectancy

Table B1 sets out life expectancy figures at selected ages for males and females and shows that life expectancy at birth for the most recent available period is 80.3 years for a female and 75.1 years for a male (see figures B1 and B2). Table B2 compares life expectancies in Ireland with those in other EU countries.

**Definition:** Life expectancy refers to the number of additional years a person of a given age can expect to live.

**TABLE B1**

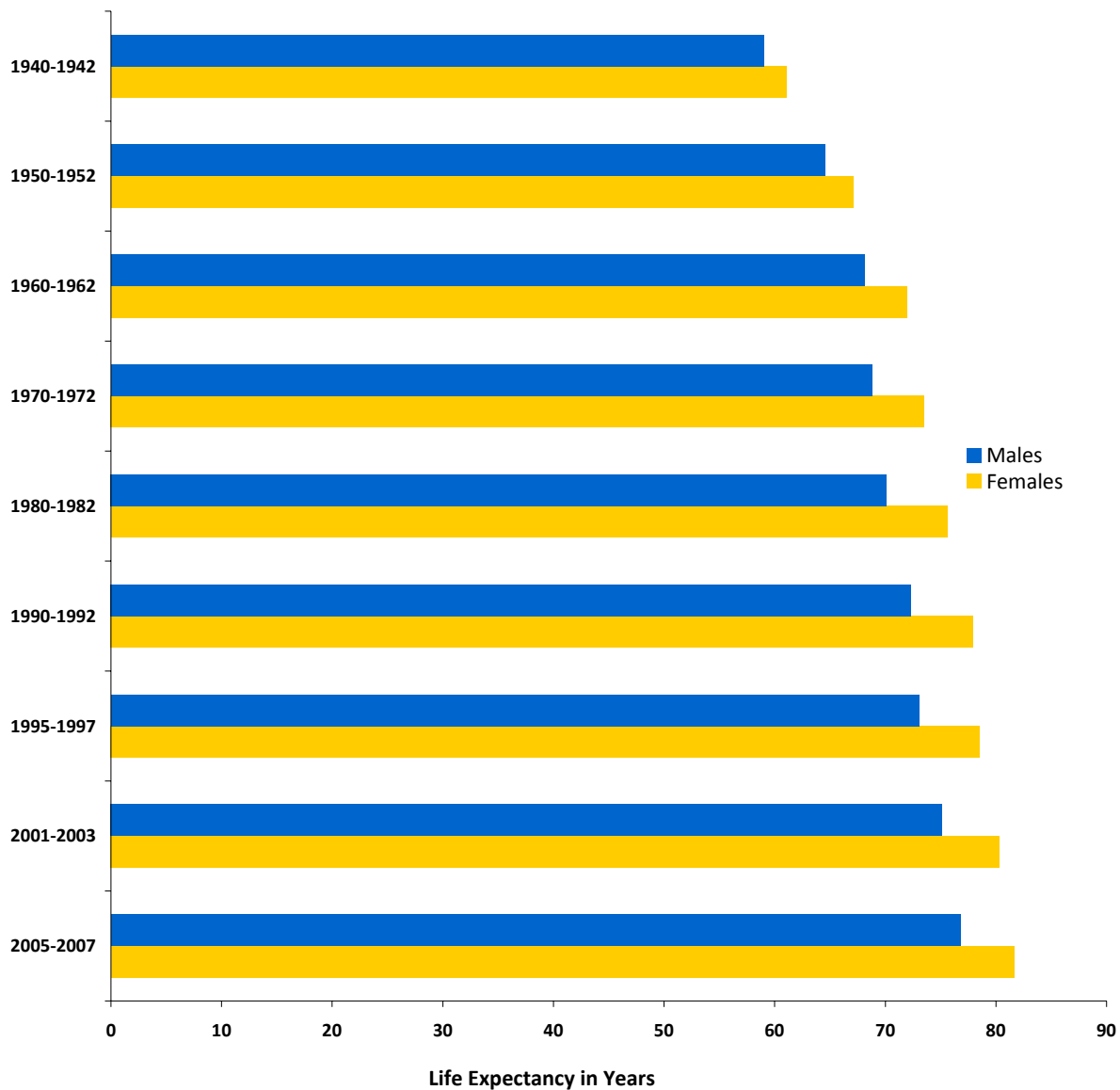
#### LIFE EXPECTANCY AT SELECTED AGES FOR THE PERIOD 1960 TO 2007

	1960-1962	1970-1972	1980-1982	1990-1992	1995-1997	2001-2003	2005-2007
<b>Males</b>							
Life Expectancy at age:							
0	68.1	68.8	70.1	72.3	73.0	75.1	76.8
1	69.3	69.2	69.9	71.9	72.5	74.6	76.1
10	60.8	60.6	61.3	63.1	63.6	65.7	67.2
30	41.7	41.5	42.1	43.9	44.5	46.5	48.0
40	32.4	32.1	32.6	34.4	35.1	37.0	38.5
50	23.5	23.3	23.6	25.2	25.8	27.8	29.2
60	15.8	15.6	15.9	17.0	17.5	19.2	20.6
65	12.6	12.4	12.6	13.4	13.8	15.4	16.6
70	9.7	9.7	9.7	10.4	10.6	11.9	13.0
80	5.1	5.4	5.4	5.8	5.9	6.5	7.1
90	2.5	2.8	2.9	3.0	3.0	3.3	3.6
<b>Females</b>							
Life Expectancy at age:							
0	71.9	73.5	75.6	77.9	78.5	80.3	81.6
1	72.9	73.8	75.4	77.4	78.0	79.7	80.9
10	64.1	65.1	66.6	68.6	69.1	70.8	72.0
30	44.7	45.6	47.0	48.9	49.5	51.1	52.3
40	35.3	36.0	37.3	39.2	39.8	41.4	42.5
50	26.3	27.0	28.0	29.8	30.3	31.9	33.1
60	18.1	18.7	19.5	21.1	21.5	22.9	24.0
65	14.4	15.0	15.7	17.1	17.4	18.7	19.8
70	11.0	11.5	12.2	13.5	13.7	14.8	15.8
80	5.9	6.2	6.7	7.4	7.5	8.2	8.8
90	3.0	3.2	3.5	3.6	3.7	4.1	4.3

Source: Central Statistics Office

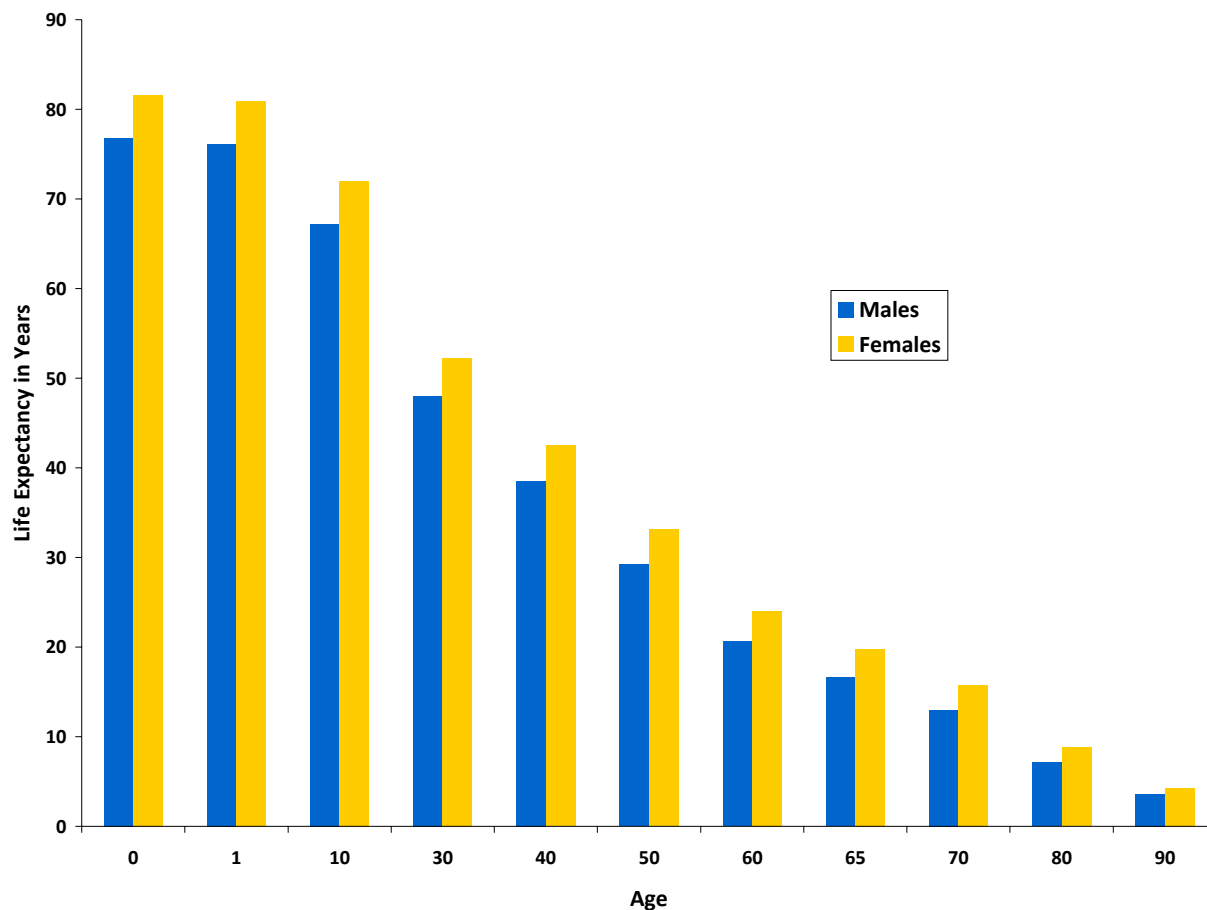
Figure B1

Life Expectancy at Birth, Ireland 1940-1942 to 2005-2007



Source: Central Statistics Office and European Health for All database, WHO Regional Office for Europe, Copenhagen , Denmark.

**FIGURE B2**  
**LIFE EXPECTANCY BY AGE AND SEX, 2005-2007**



Source: Table B1

Section B: Life Expectancy and Vital Statistics

TABLE B2  
LIFE EXPECTANCY AT SELECTED AGES FOR EU COUNTRIES, 2009 OR LATEST AVAILABLE YEAR

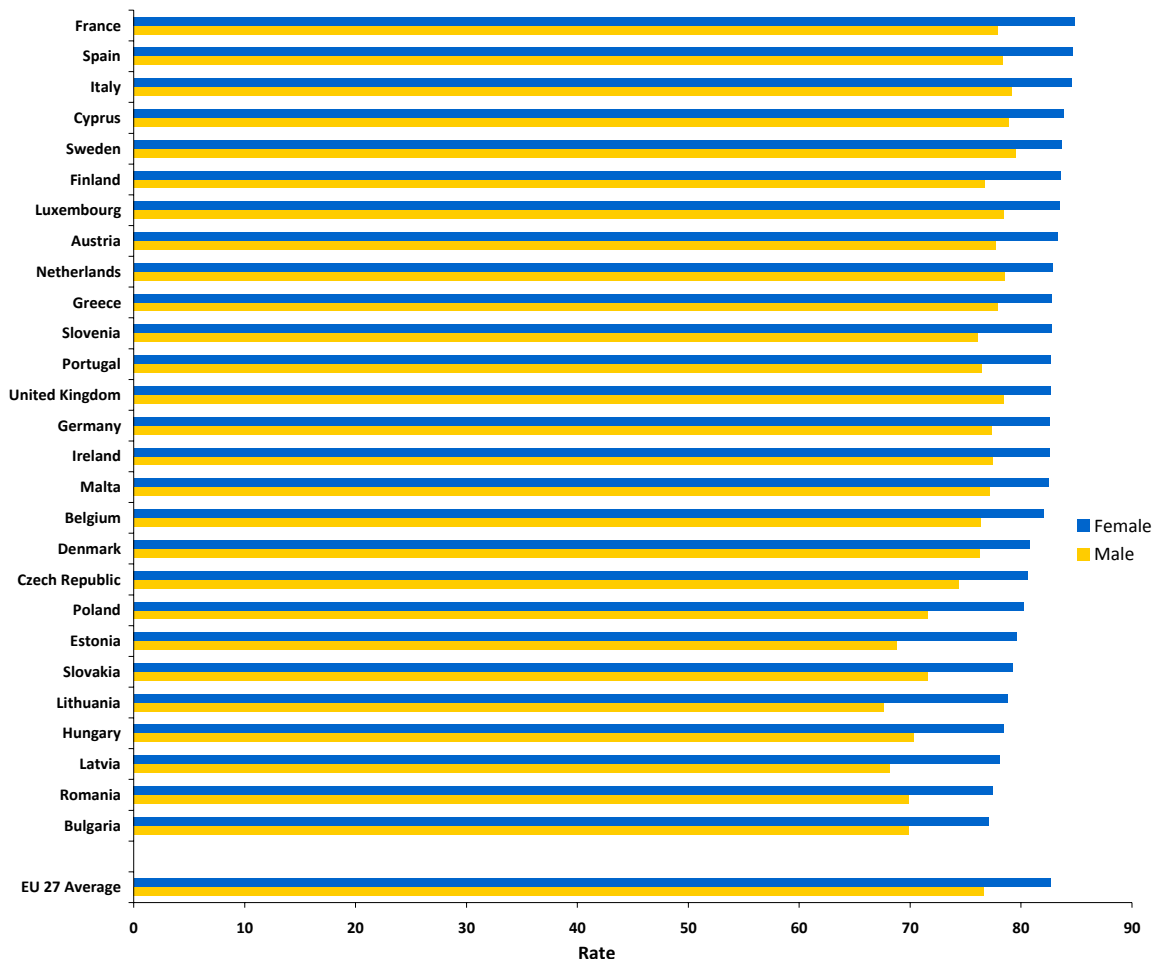
Country	Year	Life expectancy at birth		Life expectancy at age 1		Life expectancy at age 45		Life expectancy at age 65		Excess of female life expectancy over male at birth
		Male	Female	Male	Female	Male	Female	Male	Female	
Austria	2009	77.7	83.3	77.0	82.6	34.4	39.4	17.8	21.3	5.6
Belgium	2005	76.3	82.0	75.6	81.3	33.3	38.2	16.7	20.4	5.7
Bulgaria	2008	69.8	77.1	69.5	76.7	27.9	34.0	13.6	16.8	7.3
Cyprus	2009	78.9	83.9	78.2	83.0	35.8	39.7	18.4	21.1	5.0
Czech Republic	2009	74.3	80.6	73.6	79.8	31.1	36.6	15.4	18.9	6.3
Denmark	2006	76.2	80.8	75.5	80.0	32.9	36.8	16.4	19.2	4.6
Estonia	2008	68.7	79.6	68.1	79.0	27.3	36.1	13.7	19.0	10.9
Finland	2009	76.7	83.6	75.9	82.8	33.8	39.7	17.5	21.7	6.9
France	2008	77.9	84.8	77.2	84.1	34.8	41.0	18.5	23.0	6.9
Germany	2006	77.3	82.6	76.6	81.8	34.0	38.6	17.4	20.6	5.3
Greece	2009	77.9	82.8	77.2	82.0	35.0	38.8	18.2	20.3	4.9
Hungary	2009	70.3	78.5	69.7	77.9	27.5	34.9	14.0	18.3	8.2
<b>Ireland</b>	<b>2009</b>	<b>77.4</b>	<b>82.5</b>	<b>76.7</b>	<b>81.8</b>	<b>34.6</b>	<b>38.7</b>	<b>17.3</b>	<b>20.7</b>	5.1
Italy	2008	79.1	84.5	78.4	83.8	35.7	40.4	18.3	22.1	5.4
Latvia	2009	68.1	78.1	67.7	77.7	27.0	35.1	13.4	18.3	10.0
Lithuania	2009	67.6	78.8	67.0	78.1	26.6	35.5	13.5	18.5	11.2
Luxembourg	2008	78.4	83.5	77.6	82.7	35.1	39.3	17.9	21.1	5.1
Malta	2008	77.2	82.5	76.9	81.9	34.4	38.5	17.1	20.2	5.3
Netherlands	2009	78.5	82.8	77.9	82.1	34.9	38.8	17.4	21.0	4.3
Poland	2009	71.6	80.2	71.0	79.6	29.3	36.6	14.8	19.3	8.6
Portugal	2009	76.5	82.6	75.8	81.9	33.6	38.8	17.2	20.6	6.1
Romania	2009	69.9	77.5	69.7	77.2	28.0	34.4	14.1	17.3	7.6
Slovakia	2009	71.5	79.2	71.0	78.6	28.9	35.5	14.2	18.1	7.7
Slovenia	2009	76.0	82.8	75.2	82.0	32.8	38.6	16.5	20.6	6.8
Spain	2008	78.4	84.7	77.6	83.9	35.0	40.7	18.2	22.2	6.3
Sweden	2009	79.5	83.6	78.7	82.8	36.0	39.5	18.4	21.3	4.1
United Kingdom	2009	78.4	82.6	77.8	81.9	35.4	38.8	18.2	20.9	4.2
EU	2009	76.6	82.6	76.0	81.9	33.6	38.8	17.2	20.8	6.0

Source: European Health for All database, WHO, July 2011 version

Section B: Life Expectancy and Vital Statistics

Figure B3a

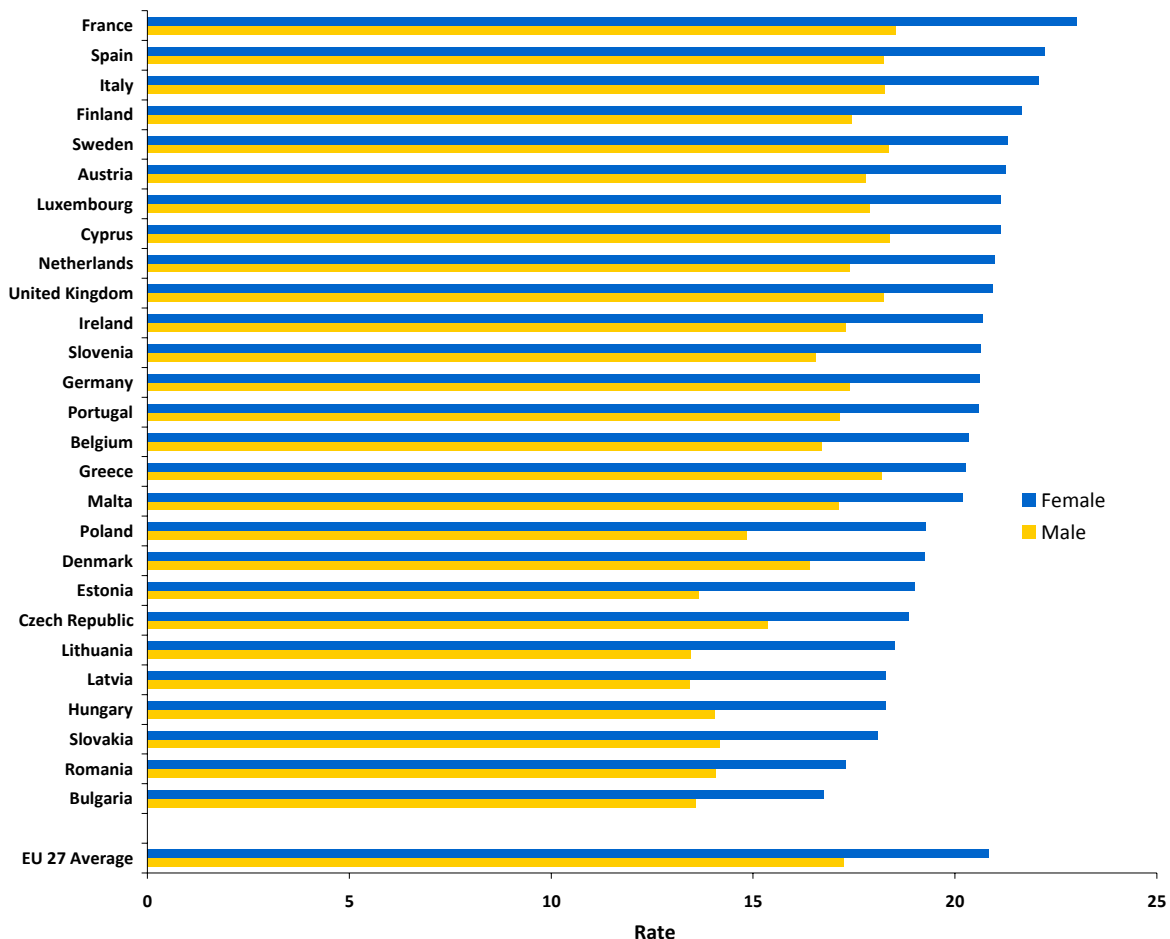
LIFE EXPECTANCY AT BIRTH FOR MALES AND FEMALES IN EU COUNTRIES, 2009 OR LATEST AVAILABLE YEAR



Source: Table B2

Figure B3b

LIFE EXPECTANCY AT AGE 65 FOR MALES & FEMALES IN EU COUNTRIES, 2009 OR LATEST AVAILABLE YEAR

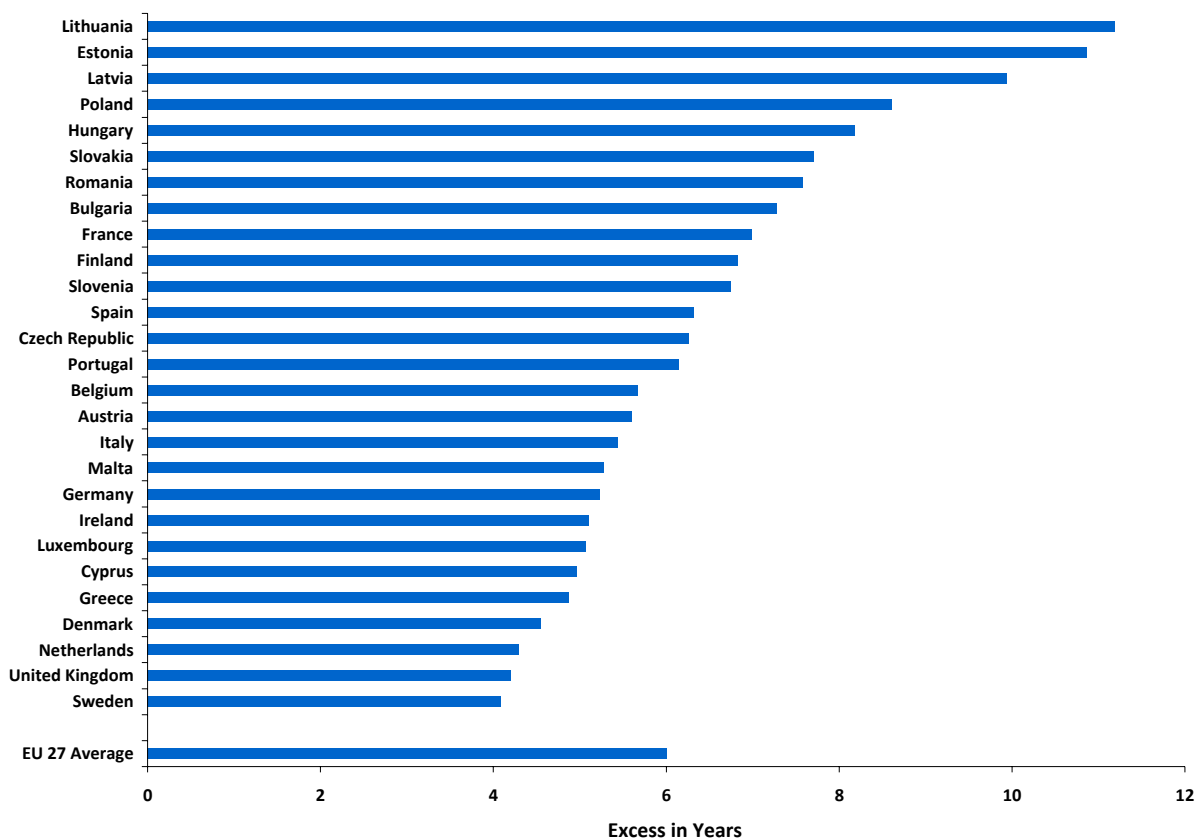


Source: Table B2

Section B: Life Expectancy and Vital Statistics

Figure B4

Excess of Female Life Expectancy over Male Life Expectancy at Birth, 2009 or Latest Available Year



Source: Table B2



## Vital Statistics

### Births, Deaths and Marriages: Numbers and Rates

The following table and accompanying figures show numbers and crude rates per 1,000 population for births, deaths and marriages for all years from 1970 to 2010. While long and short term trends can be seen in these figures, interpretation must be approached with caution and in conjunction with other relevant distributions.

Section B: Life Expectancy and Vital Statistics

**TABLE B3**  
**BIRTHS, DEATHS AND MARRIAGES: NUMBERS AND RATES, 1970 TO 2010**

Year	Number of Births	Birth rate (per 1,000 population)	Number of Deaths	Mortality rate (per 1,000 population)	Number of Marriages	Marriage rate (per 1,000 population)
1970	64,382	21.9	33,686	11.4	20,778	7.1
1971	67,551	22.7	31,890	10.7	22,014	7.4
1972	68,527	22.7	34,381	11.4	22,302	7.4
1973	68,713	22.4	34,192	11.1	22,816	7.4
1974	68,907	22.1	34,921	11.2	22,833	7.3
1975	67,178	21.1	33,173	10.4	21,280	6.7
1976	67,718	21.0	34,043	10.5	20,580	6.4
1977	68,892	21.1	33,632	10.3	20,016	6.1
1978	70,299	21.2	33,794	10.2	21,184	6.4
1979	72,539	21.5	33,771	10.0	20,806	6.2
1980	74,064	21.8	33,472	9.8	21,792	6.4
1981	72,158	21.0	32,929	9.6	20,612	6.0
1982	70,843	20.3	32,457	9.3	20,224	5.8
1983	67,117	19.1	32,976	9.4	19,467	5.5
1984	64,062	18.2	32,076	9.1	18,513	5.2
1985	62,388	17.6	33,213	9.4	18,791	5.3
1986	61,620	17.4	33,630	9.5	18,573	5.2
1987	58,433	16.5	31,413	8.9	18,309	5.2
1988	54,600	15.4	31,580	8.9	18,382	5.2
1989	52,018	14.8	32,111	9.1	18,174	5.2
1990	53,044	15.1	31,370	9.0	17,838	5.1
1991	52,718	15.0	31,305	8.9	17,441	4.9
1992	51,089	14.4	30,931	8.7	16,636	4.7
1993	49,304	13.8	32,148	9.0	16,824	4.7
1994	48,255	13.5	30,948	8.6	16,621	4.6
1995	48,787	13.5	32,259	9.0	15,604	4.3
1996	50,655	14.0	31,723	8.7	16,174	4.5
1997	52,775	14.4	31,581	8.6	15,631*	4.3*
1998	53,969	14.6	31,563	8.5	16,783*	4.5*
1999	53,924	14.4	32,608	8.7	18,526*	4.9*
2000	54,789	14.5	31,391	8.3	19,168*	5.1*
2001	57,854	15.0	30,212	7.9	19,246*	5.0*
2002	60,503	15.4	29,683	7.6	20,556	5.2
2003	61,529	15.5	29,074	7.3	20,302*	5.1*
2004	61,972	15.3	28,665	7.1	20,619*	5.1*
2005	61,372	14.8	28,260	6.8	21,841	5.2
2006	65,425	15.4	28,488	6.7	22,089	5.2
2007	71,389	16.5	28,117	6.5	22,756	5.2
2008	73,996	16.7	28,274	6.4	22,243	5.0
2009**	74,278	16.7	28,898	6.5	21,541	4.8
2010**	73,724	16.5	27,122	6.1	20,635	4.6

Source: Central Statistics Office.

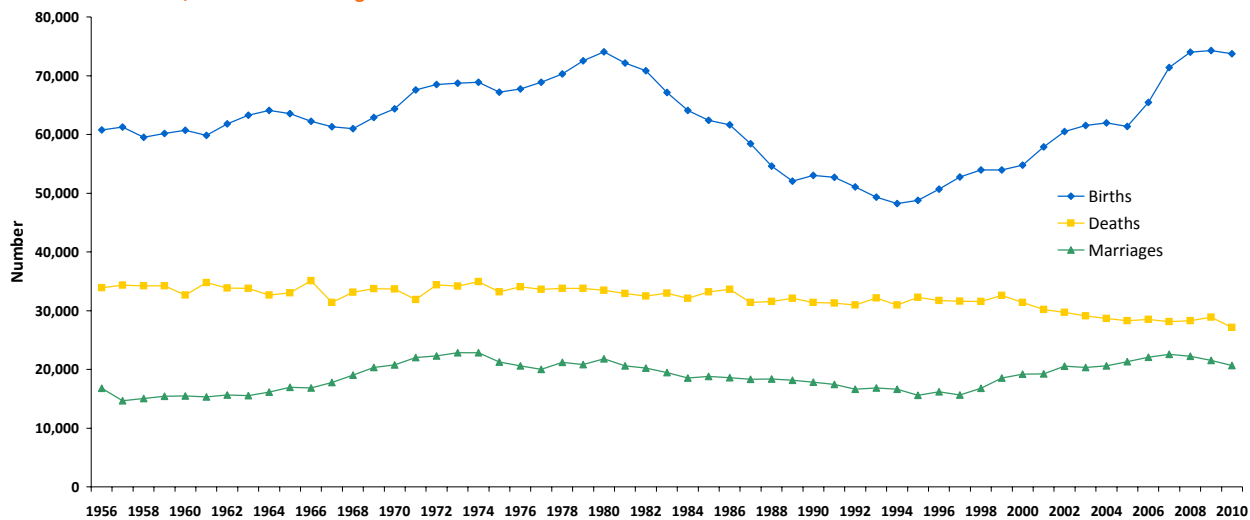
\* Please note marriage data for the years 1997 to 2001 inclusive remain provisional due to difficulties associated with extraction of the relevant information from the marriage registration documentation.

Marriage figures for 2003 and 2004 are provisional.

\*\*2009 & 2010 provisional.

## Section B: Life Expectancy and Vital Statistics

**Figure B5**  
**Number of Births, Deaths and Marriages Ireland 1956-2010**

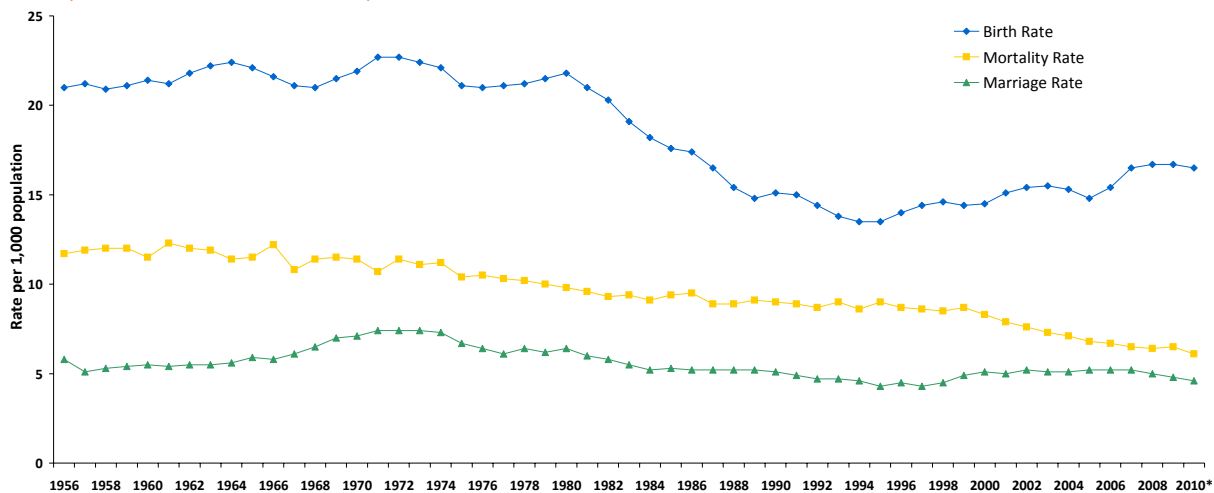


Source: Table B3

## Section B: Life Expectancy and Vital Statistics

Figure B5

### BIRTH, MORTALITY AND MARRIAGE RATES, IRELAND 1956-2010



Source: Table B3  
 \* 2009 and 2010 data are provisional.

## Outcome of Pregnancy

The general trend in the crude birth rate was downward between 1980 and 1995, falling from 21.8 to 13.5. Since the mid-1990s, a slight reversal in the general trend can be observed with the crude birth rate increasing to 16.5 in 2010. Although the total fertility rate in Ireland has declined in recent decades it has levelled off in recent years (see figure B7), and continues to be one of the highest in the EU (see figure B15). Tables are presented on national birth statistics by HSE Areas and in comparison with other EU countries.

**Definition:** The Total Fertility Rate (TFR) is derived from age a measure of the average number of children a women could expect to have if the fertility rates for a given year pertained throughout her fertile years. A value of 2.1 is generally taken to be the level at which a generation would replace itself in the long run, ignoring migration.

**TABLE B4**  
**BIRTHS (NUMBERS AND RATES), PLACE OF OCCURRENCE, AGE AT MATERNITY,**  
**PREVIOUS CHILDREN, BIRTHS OUTSIDE MARRIAGE, 1980, 1990, 2000 AND 2010**

	1980	1990	2000	2010*
<b>BIRTHS</b>				
Total number of live births	74,064	53,044	54,789	73,724
Crude birth rate (per 1,000 population)	21.8	15.1	14.5	16.5
Total fertility rate	3.20	2.10	1.90	2.07
<b>PLACE OF OCCURRENCE</b>				
Percentage of births which were domiciliary	0.27	0.33	0.47	0.40
<b>AGE AT MATERNITY</b>				
Average age at maternity (in years)	28.8	29.6	30.2	31.5
Percentage of births to mothers aged under 25 years	27.1	20.4	20.3	13.5
Percentage of births to mothers aged 35 years and over	15.1	17.3	21.7	27.9
<b>PREVIOUS CHILDREN<sup>#</sup></b>				
Percentage of births to mothers with no previous children	29.2	33.4	40.5	41.5
Percentage of births to mothers with 1 previous child	24.3	27.8	30.1	32.8
Percentage of births to mothers with 2 previous children	19.2	18.6	17.3	16.4
Percentage of births to mothers with 3 or more previous children	27.1	19.6	11.7	8.9
<b>BIRTHS OUTSIDE MARRIAGE</b>				
Total number	3,723	7,767	17,266	24,860
As a percentage of total births	5.0	14.6	31.5	33.7

Source: Central Statistics Office.

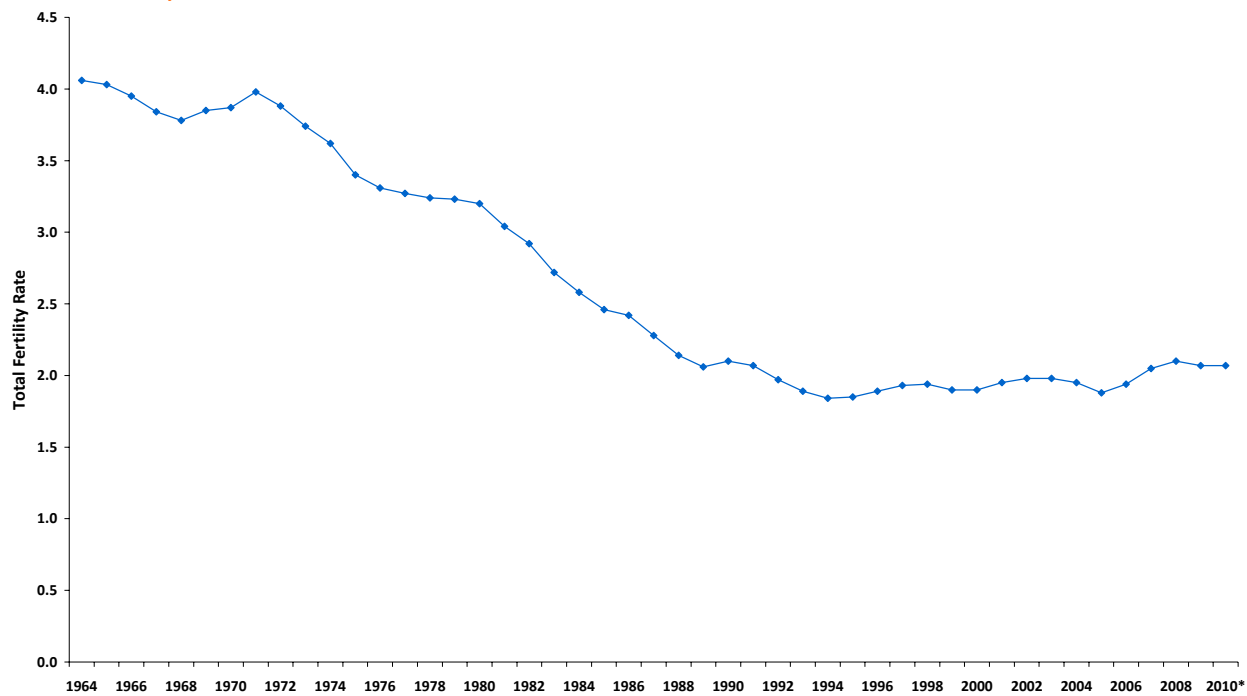
\* Provisional figures based on year of registration.

# Excludes not stated.

## Section B: Life Expectancy and Vital Statistics

Figure B7

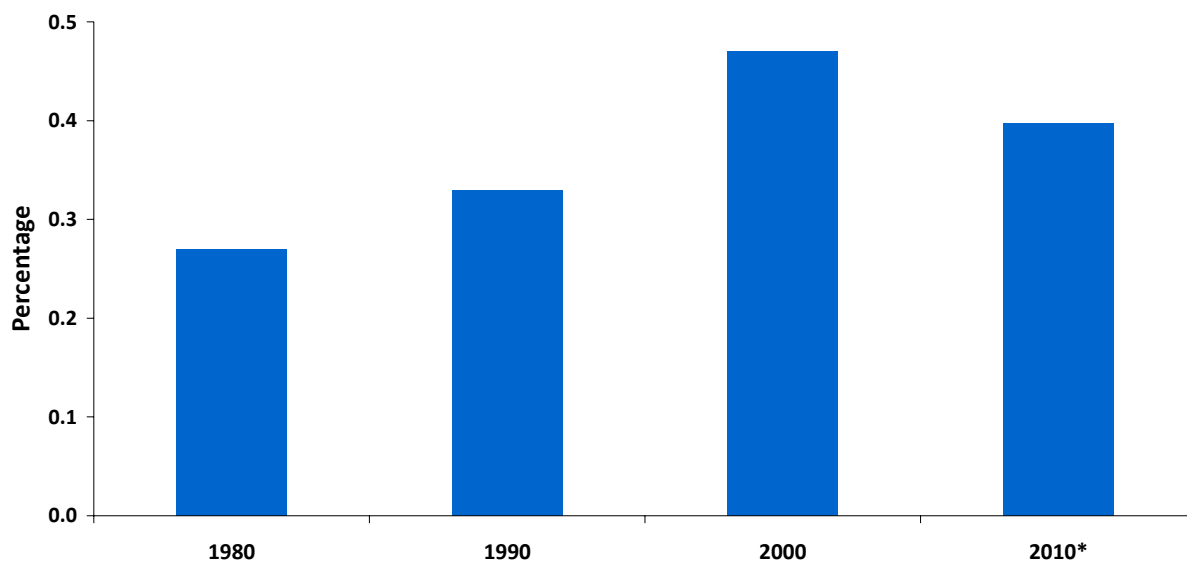
Total Fertility Rate, 1964 - 2010



Source: Central Statistics Office  
\* 2009 and 2010 data are provisional

Figure B8

Domiciliary Births as a Percentage of Total Births - 1980, 1990, 2000 and 2010

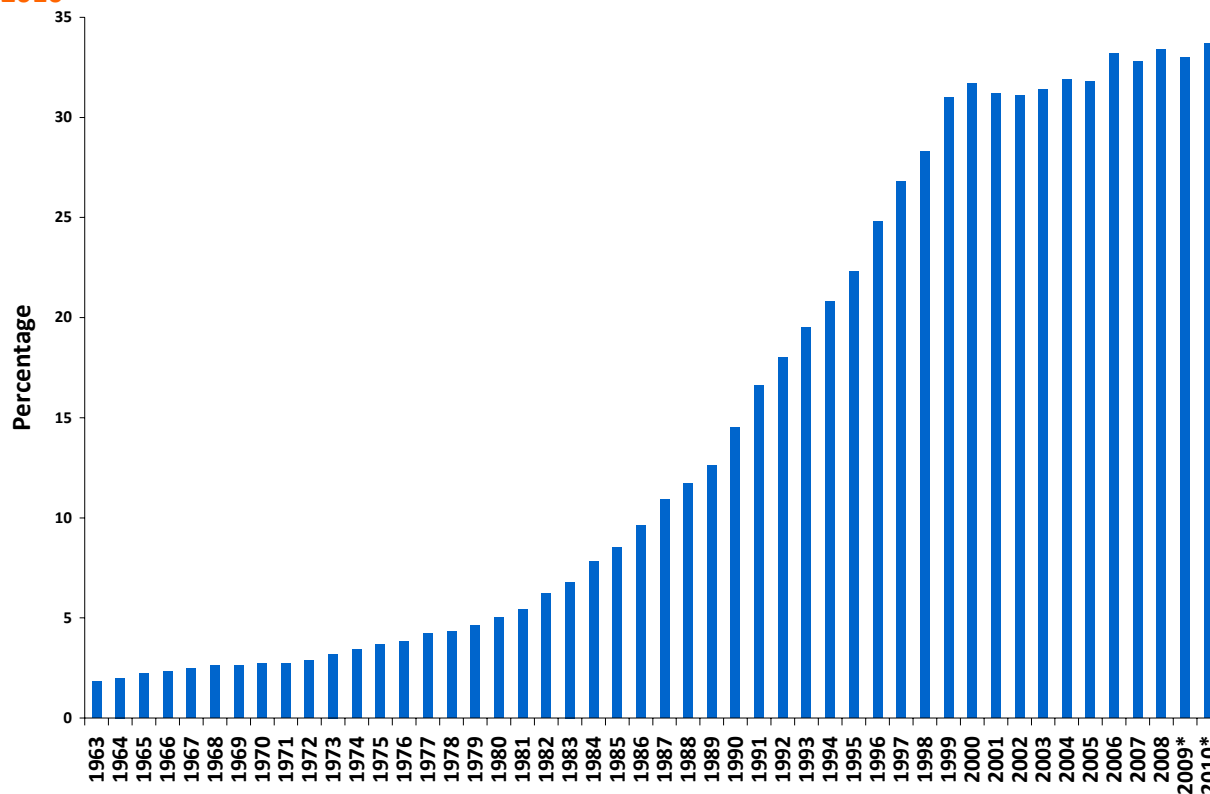


Source: Table B4

\* 2010 data provisional

Figure B9

**BIRTHS OUTSIDE MARRIAGE AS A PERCENTAGE OF TOTAL BIRTHS, 1963-2010**



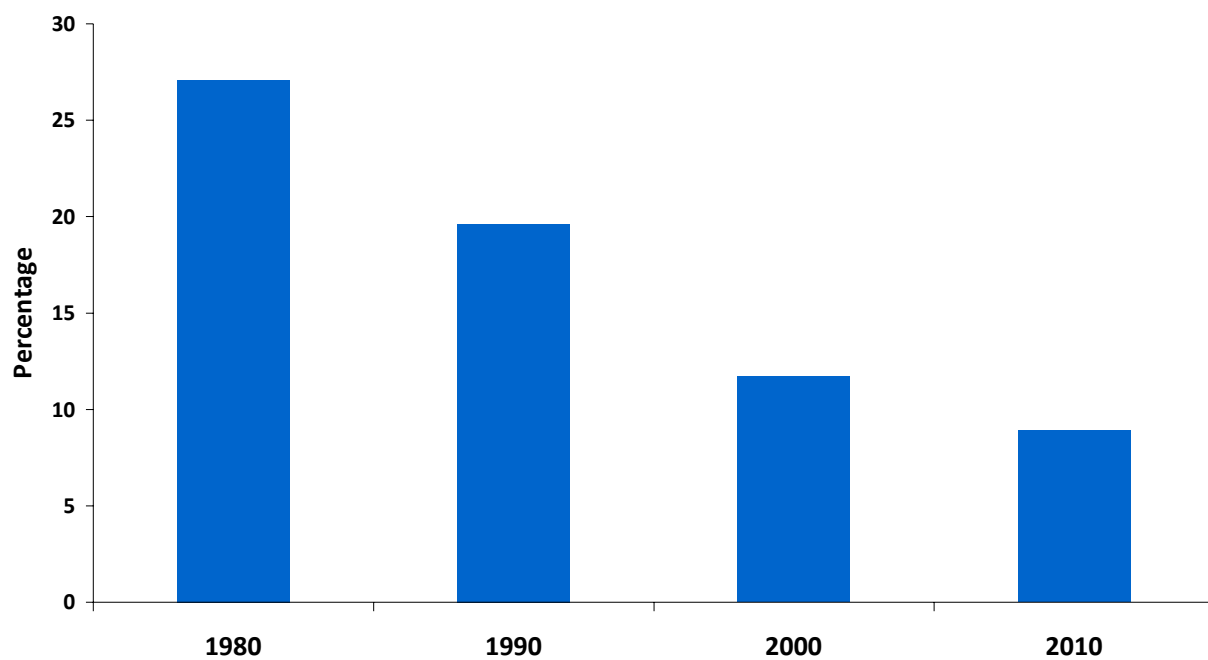
Source: Central Statistics Office

\* 2009 and 2010 data are provisional based on year of registration.



**Figure B10**

**Percentage of births to mothers with 3 or more previous children, Ireland 1980-2010**



Source: Table B4

## Section B: Life Expectancy and Vital Statistics

**TABLE B5**  
**NUMBER OF BIRTHS AND BIRTH RATES (PER 1,000 POPULATION) BY REGIONAL AUTHORITY AREAS 2010\***

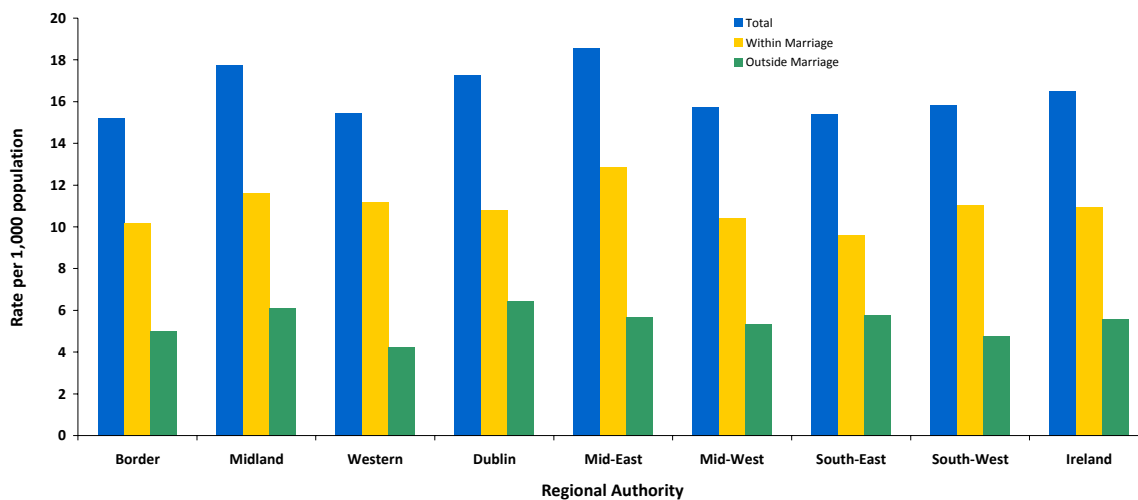
	Border	Midland	West	Dublin	Mid-East	Mid-West	South-East	South-West	Ireland
<b>AREA OF RESIDENCE (of mother)</b>									
Number of births	7,608	4,845	6,654	20,836	9,912	5,895	7,726	10,248	73,724
Rate (per 1,000 population)	15.3	18.0	15.4	16.9	19.1	15.7	15.7	15.7	16.5
<b>BIRTHS OUTSIDE MARRIAGE</b>									
Number of births	2,518	1,673	1,837	7,796	3,032	1,997	2,905	3,102	24,860
Births outside marriage as a percentage of total births	33.1	34.5	27.6	37.4	30.6	33.9	37.6	30.3	33.7

Source: Central Statistics Office

\* Provisional data

## Section B: Life Expectancy and Vital Statistics

**FIGURE B11**  
**BIRTH RATES BY REGIONAL AUTHORITY, 2010\***



\* Provisional figures based on year of registration.  
 Source: Table B5

**TABLE B6**  
**BIRTH RATES, TOTAL FERTILITY RATES, BIRTHS OUTSIDE**  
**MARRIAGE and AVERAGE AGE AT MATERNITY,**  
**EU COUNTRIES 2010**

	Crude Birth Rate Per 1,000 Population	% of Live Births Outside Marriage	Total Fertility Rate	Mean Age at Maternity
Austria	9.4	40.15	1.44	29.82
Belgium	11.7	47.01	1.84(a)	29.58(a)
Bulgaria	10.0	54.1	1.49	26.97
Cyprus	12.4	11.74(a)	1.51(a)	30.4(a)
Czech Republic	11.1	40.26	1.49	29.59
Denmark	11.4	46.99	1.87	30.59
Estonia	11.8	59.14	1.63	29.34
Finland	11.4	41.11	1.87	30.18
France	12.8	53.74(a)	2(a)	29.91(a)
Germany	8.3	33.26	1.39	30.38
Greece	9.7	6.93	1.44	30.28
Hungary	9.0	40.84	1.25	29.31
<b>Ireland</b>	<b>16.5</b>	<b>33.62</b>	<b>2.07</b>	<b>31.22</b>
Italy	9.3	25.41	1.41(a)	31.18(a)
Latvia	8.6	44.13	1.17	28.69
Lithuania	10.8	28.69	1.55	28.93
Luxembourg	11.6	33.98	1.63	30.79
Malta	9.6	25.18	1.38	29.4
Netherlands	11.1	43.28(a)	1.79	30.8
Poland	10.8	20.59	1.38	28.78
Portugal	9.5	38.12(a)	1.32(a)	29.71(a)
Romania	9.9	27.69	1.38(a)	26.94(a)
Slovakia	11.1	32.96	1.4	28.62
Slovenia	10.9	55	1.57	30.06
Spain	10.5	33.1	1.39	31.2
Sweden	12.3	54.09	1.98	30.75
United Kingdom	13.0	46.89	1.94(a)	29.42(a)
EU-27	10.7	37.43(a)	1.59(a)	29.83(a)

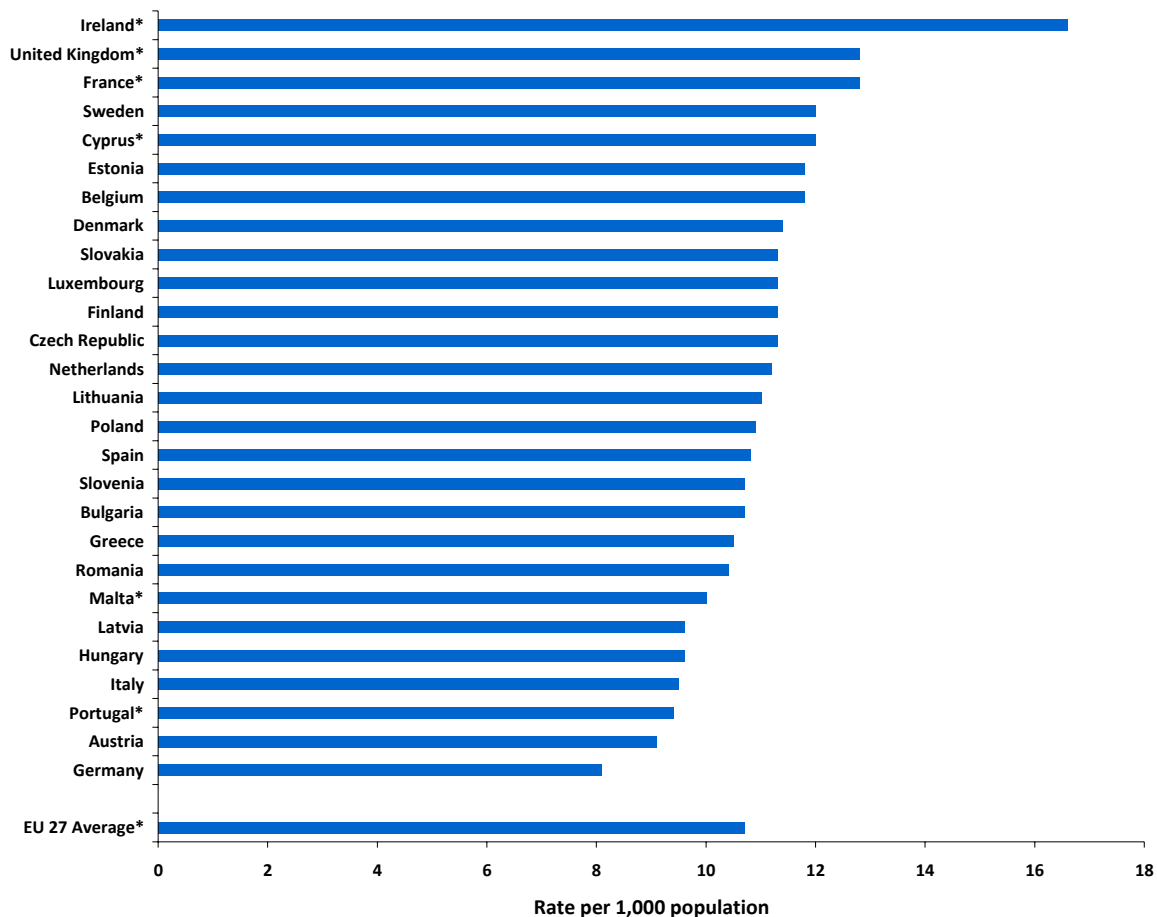
Source: Eurostat

Notes: a=2009

Section B: Life Expectancy and Vital Statistics

Figure B12

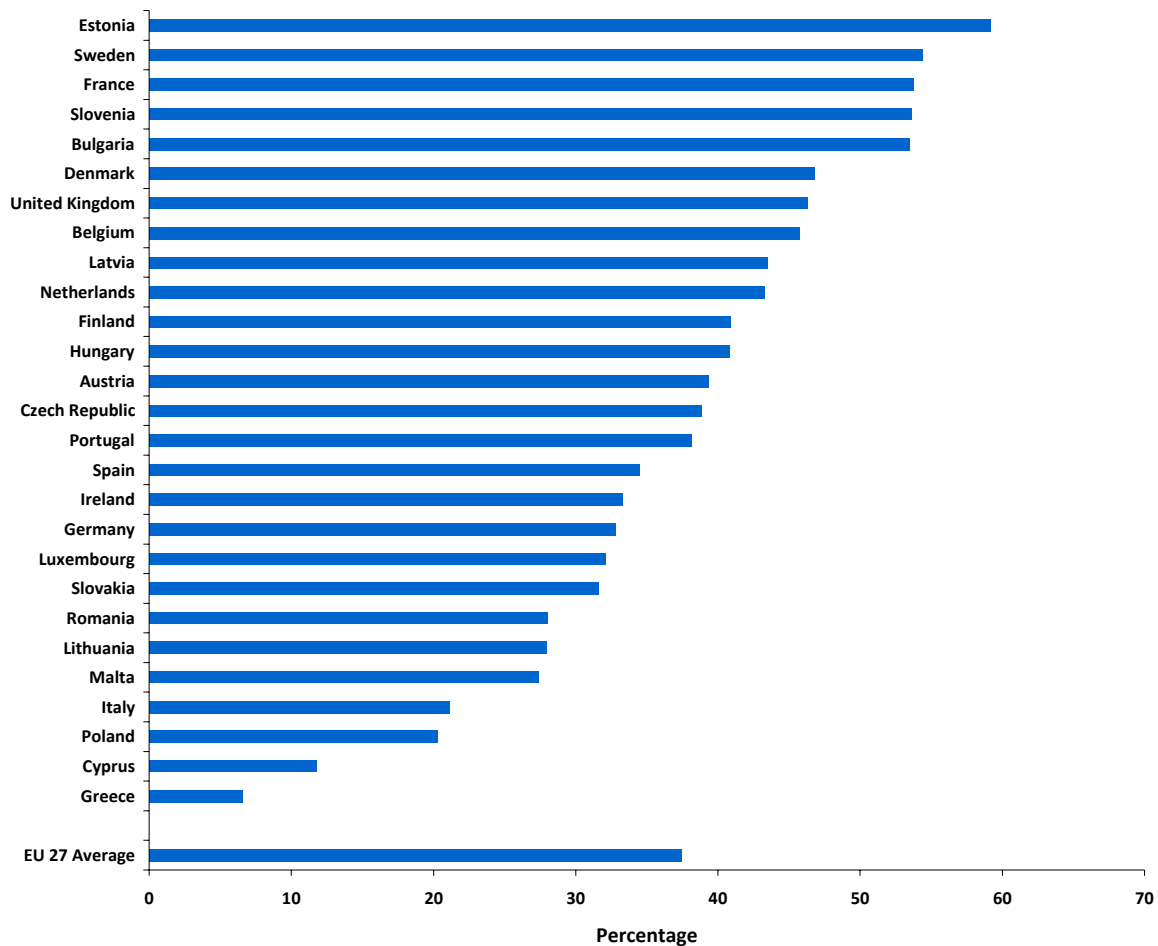
BIRTH RATES - EU COUNTRIES, 2009



Source: Table B6  
\* provisional

Figure B13

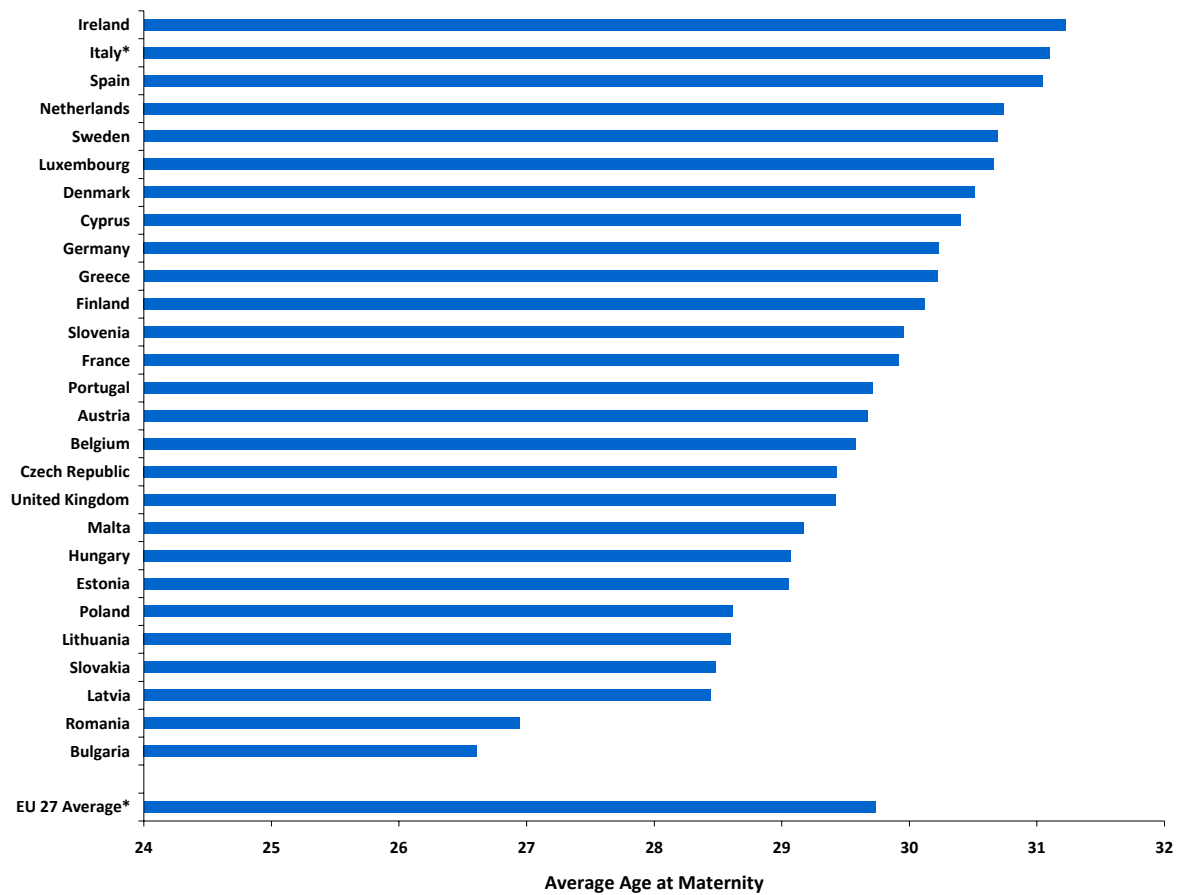
PERCENTAGE OF LIVE BIRTHS OUTSIDE MARRIAGE - EU COUNTRIES, 2009



Source: Table B6

Figure B14

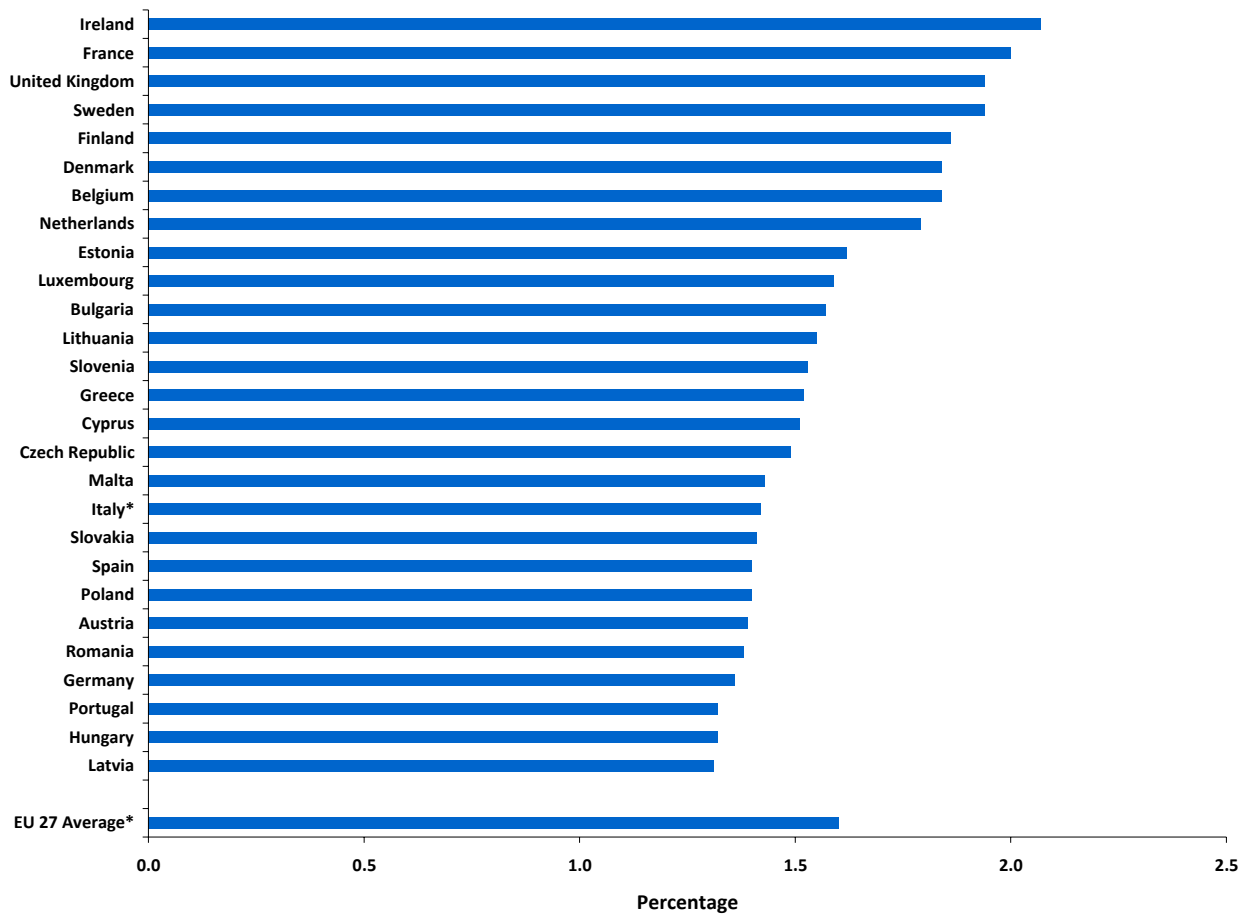
AVERAGE AGE AT MATERNITY - EU COUNTRIES, 2009



Source: Table B6  
\* 2008

Figure B15

TOTAL FERTILITY RATE - EU COUNTRIES, 2009



Source: Table B6  
\* 2008



## Section B: Life Expectancy and Vital Statistics

### Mortality

The number of deaths registered in 2010 was 27,122. This gives a crude death rate of 6.1 per 1,000 population (see Table B3 for details). The principal causes of death were diseases of the circulatory system accounting for 34% of the total. 29% of all deaths were due to cancer and 0.7% was caused by transport accidents (see Table B7 and Fig B16). Table B8 gives EU comparisons based on statistics compiled by the World Health Organisation.

Cause of Death Categories:

- \* Diseases of the Circulatory System refer to International Classification of Diseases, Tenth Revision ICD 10 detailed list numbers I00-I99.
- \* Ischaemic Heart Disease refers to ICD 10 detailed list numbers I20-I25.
- \* Cerebrovascular Diseases refers to ICD 10 detailed list numbers I60-I69.
- \* Cancer refers to ICD 10 detailed list numbers C00-C97.
- \* Cancer of the Trachea, Bronchus and Lung refers to ICD 10 detailed list number C33-C34.
- \* Cancer of the Female Breast refers to ICD 10 detailed list number C50.
- \* External Causes of Injury and Poisoning refer to ICD 10 detailed list numbers V01-Y89.
- \* Motor Vehicle Traffic Accidents refer to ICD 10 detailed list numbers V01-V99.
- \* Suicide refers to ICD 10 detailed list numbers X60-X84.

Age-Standardised Mortality Rates take account of differences in the age structure of the population between areas and over time by working out the rate which would apply if each area showed the age structure of the Standard European Population (as supplied by the WHO Regional Office for Europe, Copenhagen, Denmark).

## Section B: Life Expectancy and Vital Statistics

**TABLE B7**  
**PRINCIPAL CAUSES OF DEATH: NUMBERS, CRUDE DEATH RATES AND AGE-STANDARDISED MORTALITY RATES PER 100,000 POPULATION - 1980, 1990, 2000 AND 2009**

	1980	1990	2000	2010*
<b>ALL CAUSES</b>				
Number	33,472	31,370	31,391	27,122
Crude death rate	984.2	894.8	828.4	606.7
Age-standardised mortality rate	1106.1	925.4	794.5	539.7
<b>DISEASES OF THE CIRCULATORY SYSTEM</b>				
All Circulatory System Diseases				
Number	16,977	14,311	12,666	9,188
Crude death rate	499.2	408.2	334.2	205.5
Age-standardised mortality rate	568.2	419.6	315.0	176.1
Ischaemic Heart Disease:				
Number	8,326	8,039	6,589	4,625
Crude death rate	244.8	229.3	173.9	103.5
Age-standardised mortality rate	276.9	238.0	165.9	90.2
Cerebrovascular Disease:				
Number	4,036	2,971	2,738	2,014
Crude death rate	118.7	84.7	72.3	45.1
Age-standardised mortality rate	134.1	84.9	66.3	37.6
<b>CANCER</b>				
All Malignant Neoplasms:				
Number	6,287	7,115	7,666	8,161
Crude death rate	184.9	202.9	202.3	168.1
Age-standardised mortality rate	210.0	216.6	204.4	171.7
Cancer of the Trachea, Bronchus and Lung:				
Number	1,268	1,529	1,568	1,655
Crude death rate	37.3	43.6	41.4	37.0
Age-standardised mortality rate	42.3	46.6	42.2	35.7
Cancer of the Female Breast:				
Number	582	603	668	634
Crude death rate	34.4	34.2	35.0	28.1
Age-standardised mortality rate	39.8	36.8	35.2	26.0
<b>EXTERNAL CAUSES OF INJURY AND POISONING</b>				
All Deaths from External Causes:				
Number	1,713	1,502	1,752	1,601
Crude death rate	50.4	42.8	46.2	35.8
Age-standardised mortality rate	55.0	45.3	45.0	35.0
Transport Accidents:				
Number	627	500	448	186
Crude death rate	18.4	14.3	11.8	4.2
Age-standardised mortality rate	19.0	14.5	11.2	4.2
Suicide:				
Number	216	334	486	486
Crude death rate	6.4	9.5	12.8	10.9
Age-standardised mortality rate	7.7	10.6	12.8	10.9

\*Provisional figures based on year of registration.

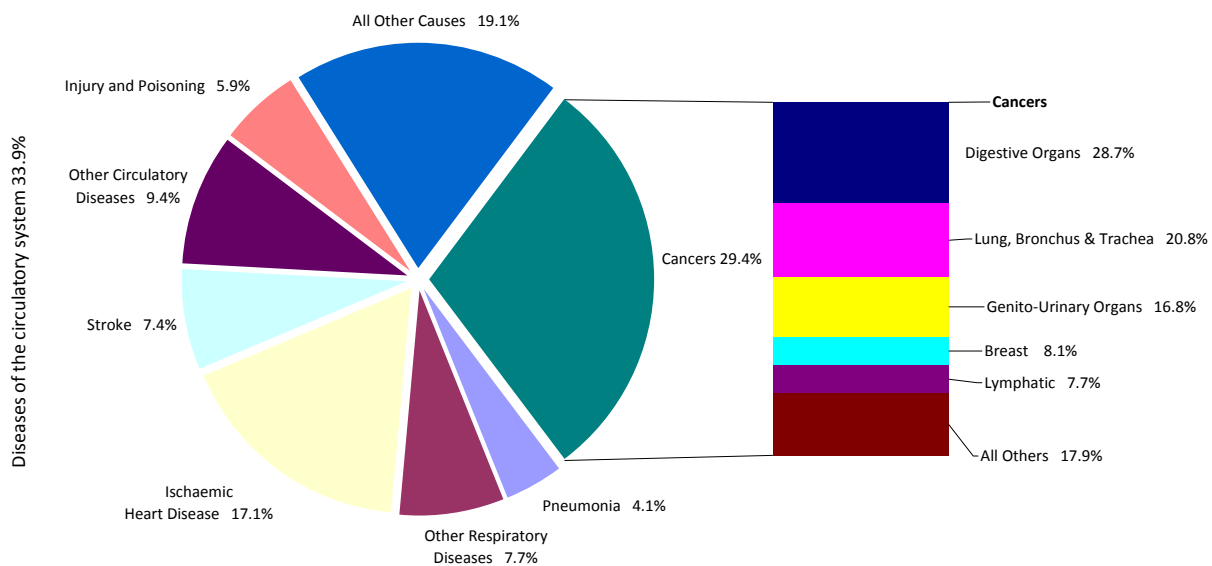
Source: Central Statistics Office and Public Health Information System (PHIS), Department of Health and Children

Notes:

(i) Since 2007, all deaths registered in the year have been included in the statistics, in some cases with a provisional cause of death. Previously the practice was not to include deaths in the annual summary statistics until the cause of death had been definitely established. Also since 2007, underlying Cause of Death is classified according to International Classification of Diseases, Version 10 (ICD10) instead of to International Classification of Diseases, Version 9 (ICD9). Because of these changes, caution should be taken in directly comparing these mortality statistics with those of the years prior to 2007.

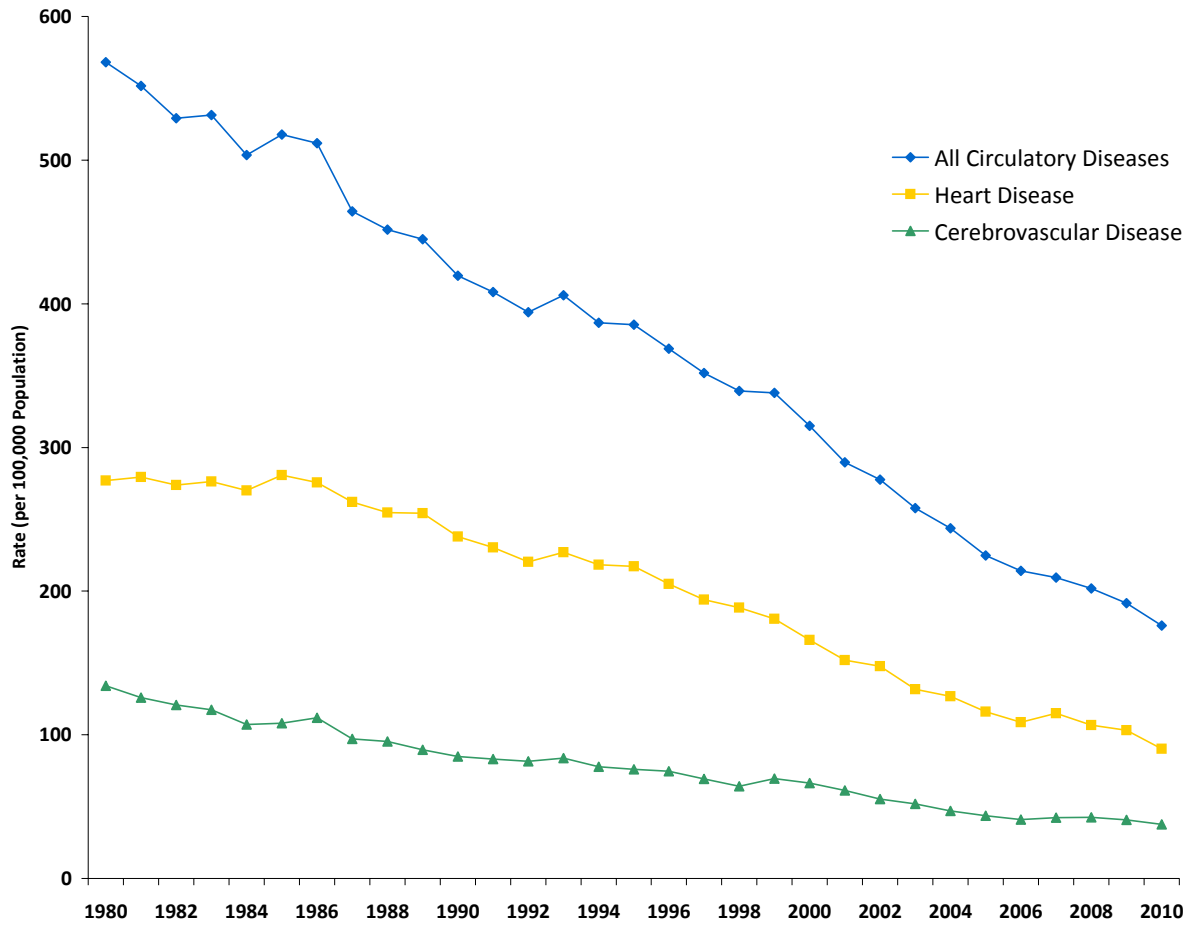
(ii) Age-standardised rates are based on World Health Organisation Standardised European Population.

**Figure B16**  
**DEATHS BY PRINCIPAL CAUSES, PERCENTAGE DISTRIBUTION, 2010**



Source: Central Statistics Office

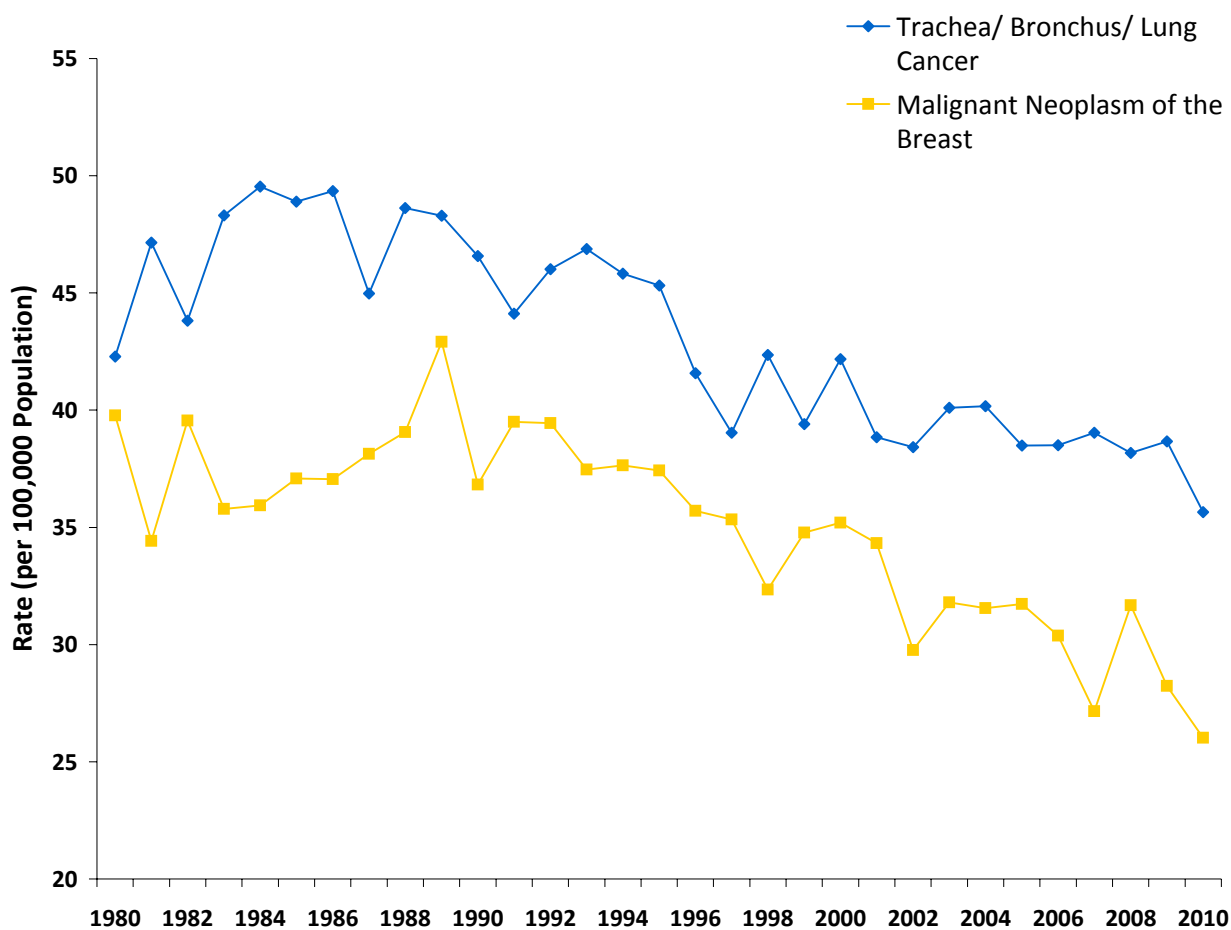
**Figure B17**  
**Diseases of the Circulatory System - Trends in Age-Standardised Death Rates, 1980-2010**



Source: Central Statistics Office and Public Health Information System (PHIS), Department of Health and Children 2009 and 2010 data provisional.

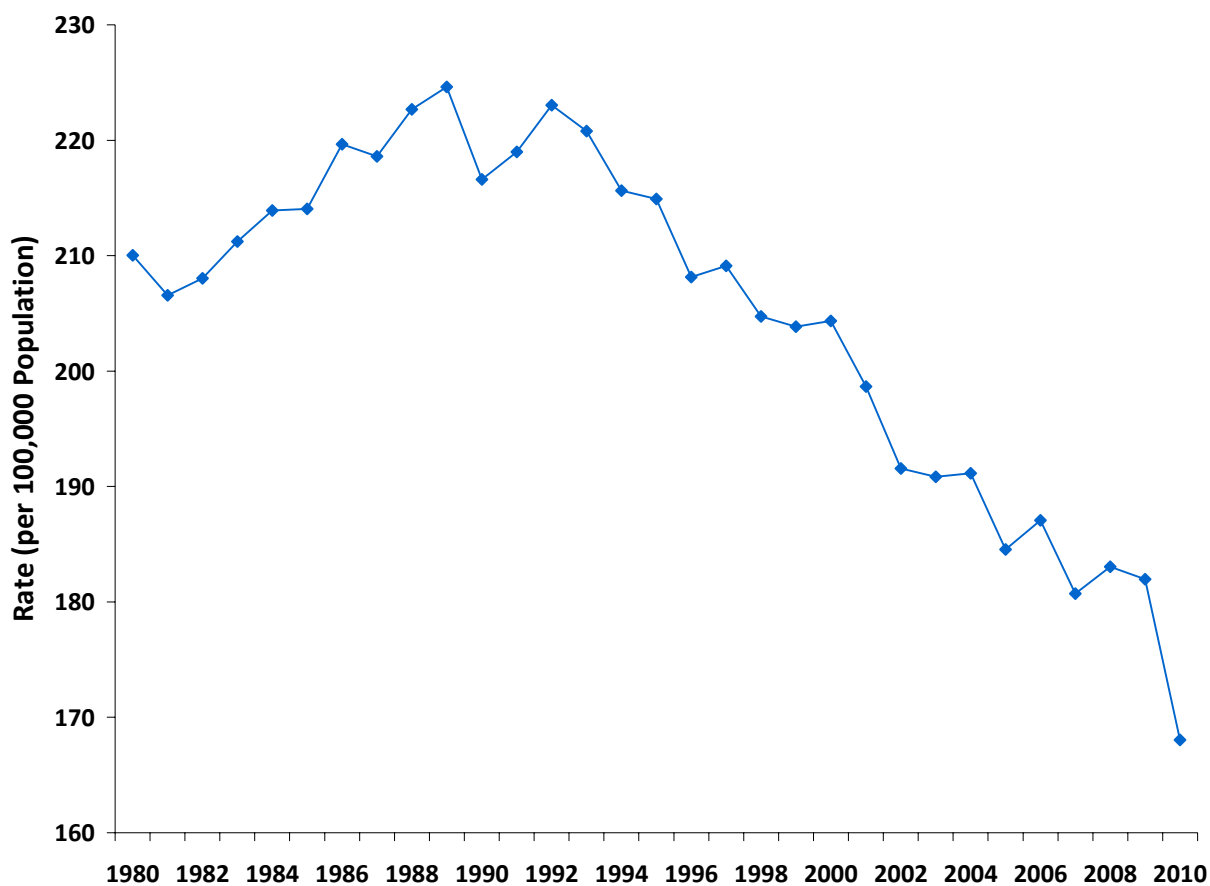
Figure B18

Cancer of the Trachea/Bronchus/Lung and Female Breast - Trends in Age Standardised Rates, 1980-2010



Source: Central Statistics Office and Public Health Information System (PHIS), Department of Health and Children 2009 and 2010 data provisional.

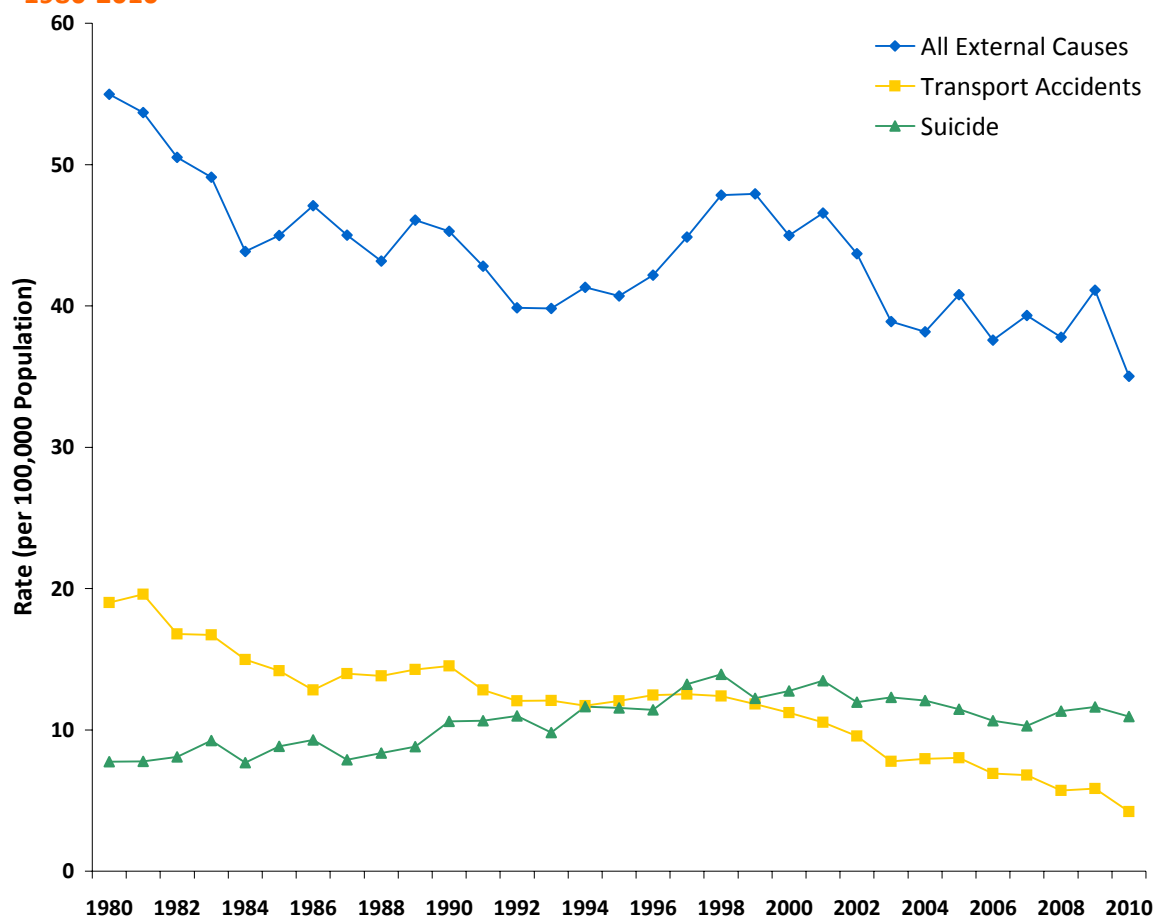
**Figure B19**  
**ALL CANCERS/MALIGNANT NEOPLASMS - TRENDS IN AGE-STANDARDISED DEATH RATES, 1980-2010**



Source: Central Statistics Office and Public Health Information System (PHIS), Department of Health and Children  
2009 and 2010 data provisional.

Figure B20

EXTERNAL CAUSES - TRENDS IN AGE-STANDARDISED DEATH RATES, 1980-2010



Source: Central Statistics Office and Public Health Information System (PHIS), Department of Health and Children  
2009 and 2010 data provisional.

## Section B: Life Expectancy and Vital Statistics

**TABLE B8**  
**AGE-STANDARDISED MORTALITY RATES PER 100,000 POPULATION BY PRINCIPAL CAUSES FOR EU COUNTRIES - 2009 OR LATEST YEAR AVAILABLE**

Country	Year of data	All Causes	Diseases of the Circulatory System			Cancer			External Causes of Injury and Poisoning		
			All Circulatory System Diseases	Ischaemic Heart Disease	Stroke	All Malignant Neoplasms	Cancer of the Trachea, Bronchus and Lung	Cancer of the Female Breast	All Deaths from External Causes	Motor Vehicle Traffic Accidents	Suicide
Austria	2009	563.1	213.1	97.8	33.6	157.9	31.4	22.8	38.9	6.2	12.8
Belgium	2005	635.2	198.2	67.5	43.7	174.5	44.5	29.4	50.3	10.0	17.6
Bulgaria	2008	995.4	611.3	126.0	186.6	171.6	34.5	23.3	44.9	8.4	10.1
Cyprus	2009	524.7	191.6	69.7	36.4	121.4	23.8	21.3	34.4	10.4	3.6
Czech Republic	2009	743.9	357.0	170.1	79.1	197.4	39.6	20.1	48.2	6.9	12.4
Denmark	2006	682.1	193.5	71.6	52.4	207.9	52.3	31.1	39.0	5.5	10.6
Estonia	2008	893.1	451.4	224.4	76.7	190.3	38.4	22.6	92.7	9.7	16.5
Finland	2009	579.9	218.1	122.5	45.9	134.8	25.4	19.5	63.8	4.7	18.3
France	2008	522.5	126.1	34.3	27.5	168.2	35.8	24.5	44.4	6.4	15.0
Germany	2006	596.6	239.3	97.9	42.6	165.0	33.7	25.5	29.8	5.6	9.8
Greece	2009	577.2	244.6	67.4	74.7	153.5	38.1	21.1	29.9	13.4	3.0
Hungary	2009	914.9	421.2	214.8	90.8	243.2	65.9	28.1	59.0	8.5	21.8
<b>Ireland*</b>	<b>2009</b>	<b>591.4</b>	<b>191.6</b>	<b>103.1</b>	<b>40.8</b>	<b>182.0</b>	<b>38.7</b>	<b>28.2</b>	<b>41.1</b>	<b>4.8</b>	<b>11.6</b>
Italy	2008	502.9	173.8	60.3	47.3	161.2	33.4	23.5	27.4	8.0	5.4
Latvia	2009	951.8	479.5	254.5	132.3	193.6	34.0	25.2	86.7	9.6	20.7
Lithuania	2009	963.2	496.8	305.1	119.5	190.5	33.3	24.2	115.8	11.4	31.5
Luxembourg	2008	545.7	196.1	59.9	44.7	154.3	27.5	23.0	43.5	7.8	8.6
Malta	2008	597.0	225.0	120.9	55.2	157.3	28.2	22.9	27.5	4.4	3.1
Netherlands	2009	562.4	154.2	43.9	34.9	186.4	46.3	27.3	26.8	3.5	8.5
Poland	2009	809.7	356.3	96.9	72.4	201.8	49.5	20.3	57.6	10.7	15.8
Portugal	2009	611.9	177.6	42.2	74.7	156.2	23.8	20.2	33.0	8.7	7.9
Romania	2009	959.5	548.6	188.8	169.9	181.4	38.1	22.6	53.9	12.7	11.2
Slovakia	2009	860.3	446.6	268.1	94.4	196.7	34.7	21.3	51.0	7.2	10.3
Slovenia	2009	625.1	231.8	64.4	66.2	198.4	37.1	25.5	61.1	8.1	18.7
Spain	2008	519.7	151.3	47.4	38.2	154.6	33.8	18.2	26.8	6.4	6.5
Sweden	2009	520.3	186.9	83.7	40.5	144.8	24.8	19.1	37.1	3.4	12.3
United Kingdom	2009	562.6	169.2	80.8	43.2	172.5	39.4	25.4	27.5	3.7	6.6
EU 27 Average	2009	618.4	232.8	86.4	55.5	171.9	37.3	23.5	37.8	7.0	10.4

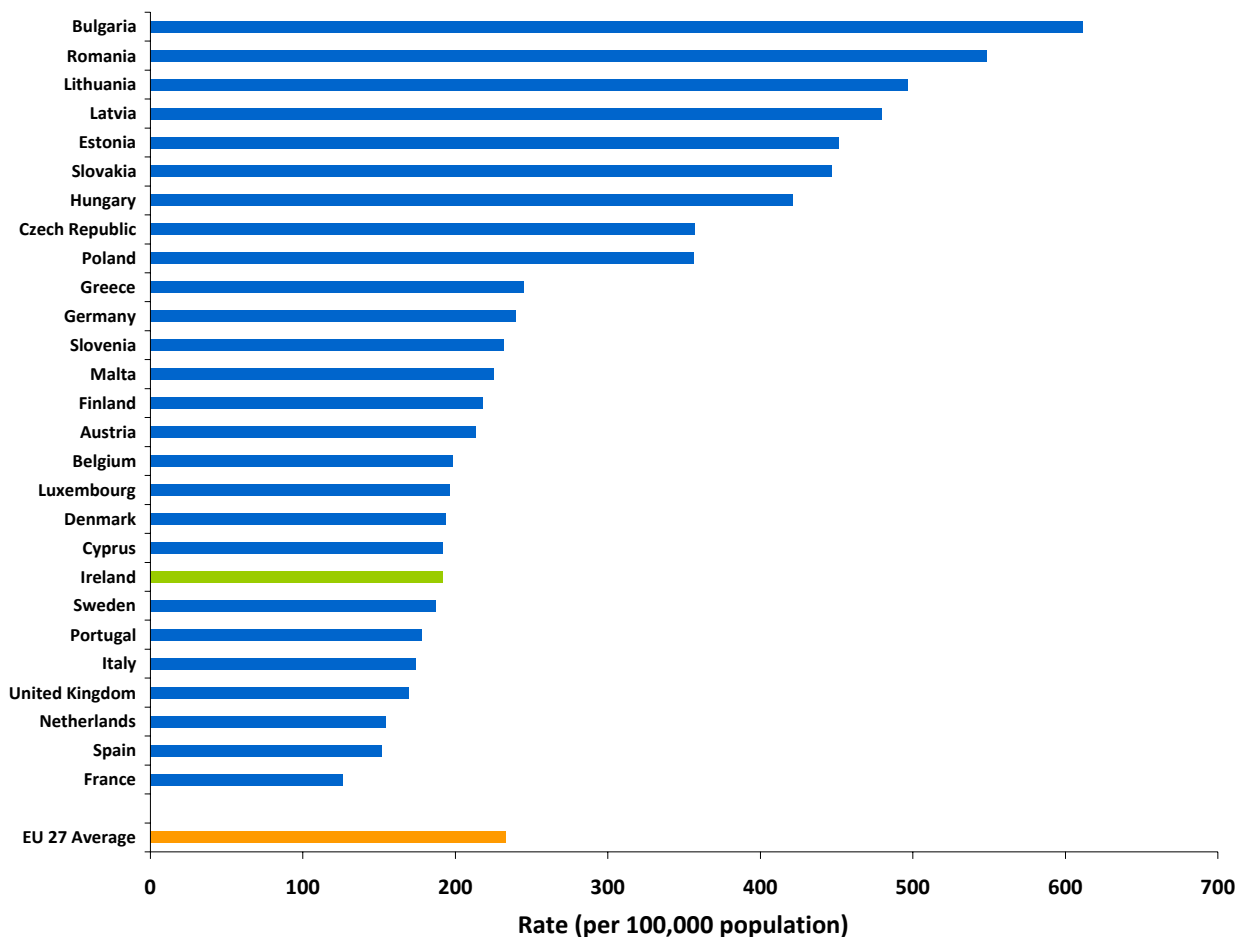
Source: European Health for All database, WHO Regional Office for Europe, Copenhagen, Denmark, July 2011

\* Source: Central Statistics Office. Data for 2009 are provisional based on year of registration.



Figure B21

AGE STANDARDISED MORTALITY RATES FOR DISEASES OF THE CIRCULATORY SYSTEM - EU COUNTRIES 2009 OR LATEST YEAR AVAILABLE

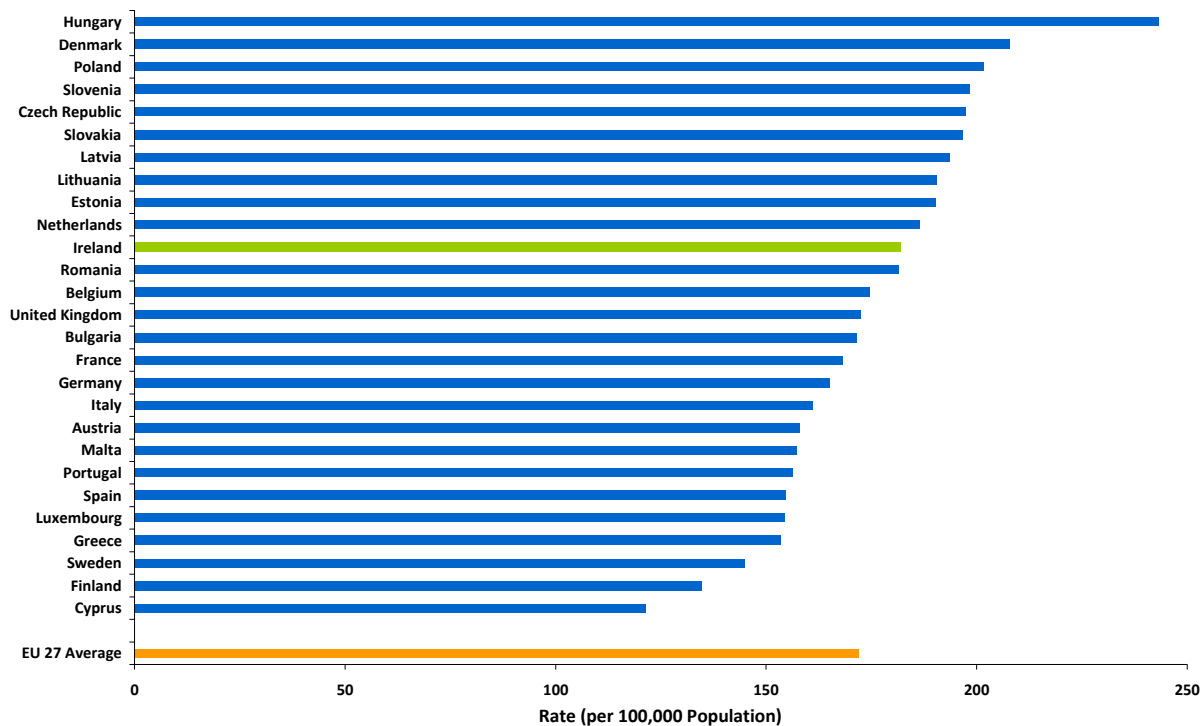


Source: Table B8

Section B: Life Expectancy and Vital Statistics

Figure B22

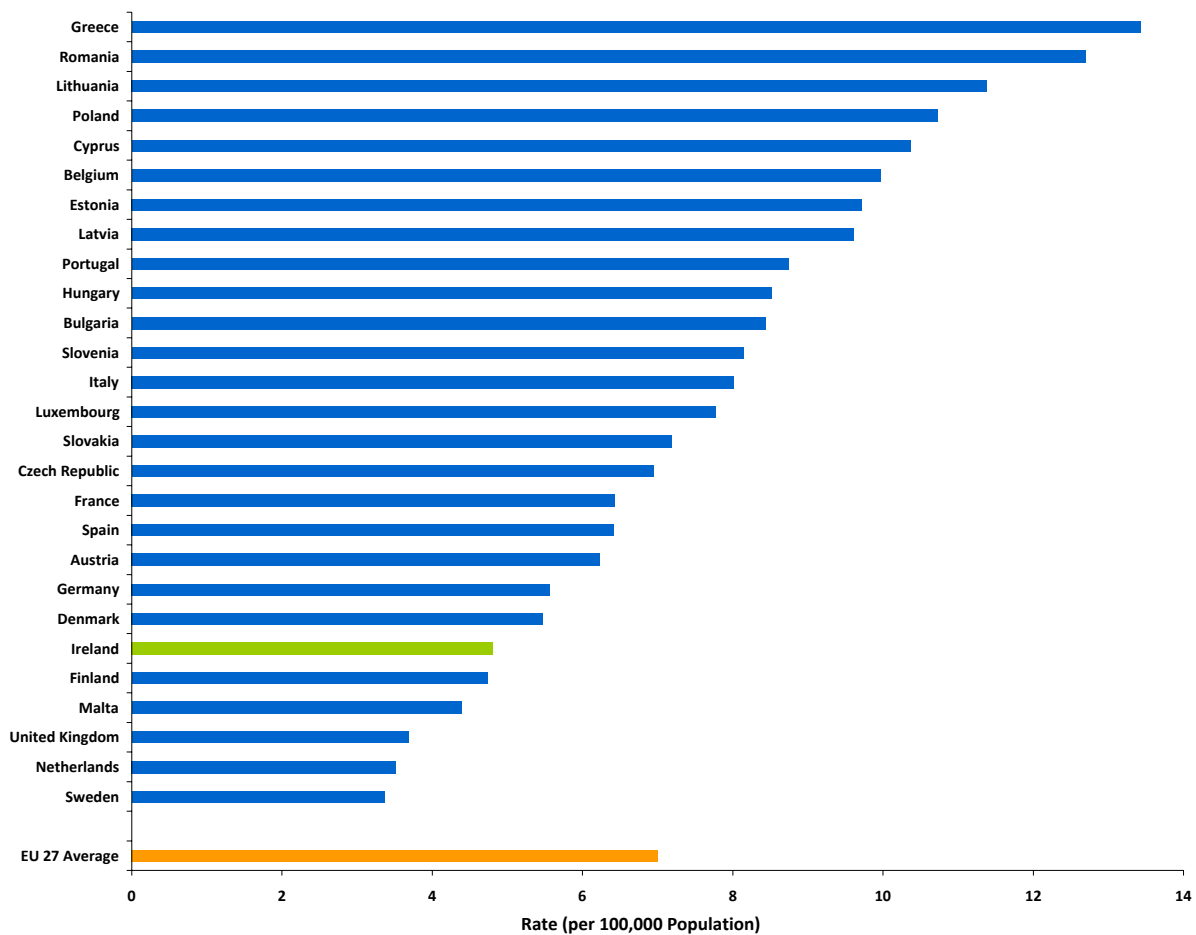
AGE STANDARDISED MORTALITY RATES FOR CANCER - EU COUNTRIES, 2009 OR LATEST AVAILABLE YEAR



Source: Table B8

Section B: Life Expectancy and Vital Statistics

Figure B23  
 AGE STANDARDISED MORTALITY RATES FOR MOTOR VEHICLE TRAFFIC ACCIDENTS, 2009 OR LATEST  
 AVAILABLE YEAR - EU COUNTRIES



Source: Table B8

## Smoking and Alcohol Related Deaths

The World Health Organisation calculates Standardised Death Rates for smoking and alcohol related deaths from selected causes of death which are known from literature to be related to smoking and alcohol consumption. These are relatively crude indicators and are not a direct estimate of tobacco or alcohol attributable mortality.

Smoking related causes of death include cancers of the mouth and pharynx, larynx, trachea, bronchus, lung and oesophagus, Ischaemic heart disease, cerebrovascular disease, chronic obstructive pulmonary disease (ICD-10: C00-C14, C15, C32-34, I20-I25, I60-I69, J40-J47).

Alcohol related causes of death include cancer of the oesophagus and larynx (cancer of the liver is not available in the 175 list), alcohol dependence syndrome (alcoholic psychoses not available in BTL), chronic liver diseases and cirrhosis, and all external causes (ICD-10: C15, C32, F10, K70, K73, K74, K76, V00-Y99).

**Table B9**  
**AGE-STANDARDISED MORTALITY RATES PER 100,000**  
**POPULATION FOR SELECTED SMOKING AND ALCOHOL RELATED**  
**CAUSES FOR EU COUNTRIES, 2009 OR LATEST YEAR AVAILABLE**

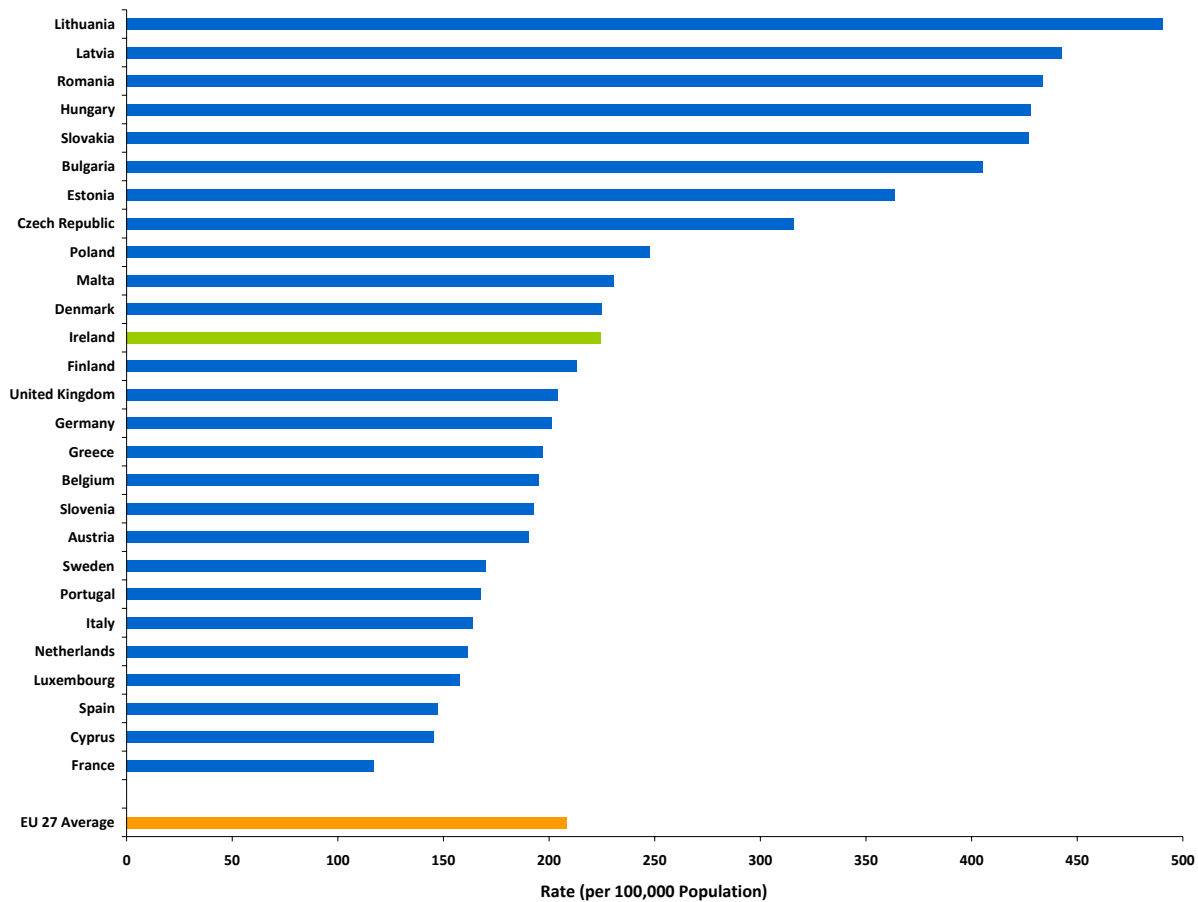
Country	Year of Data	Smoking Related Causes	Alcohol Related Causes
Austria	2009	190.1	63.7
Belgium	2005	194.8	69.0
Bulgaria	2008	372.5	70.3
Cyprus	2009	145.1	41.8
Czech Republic	2009	315.7	71.3
Denmark	2006	225.0	73.5
Estonia	2008	363.7	134.9
Finland	2009	213.2	88.9
France	2008	117.1	65.7
Germany	2006	201.2	54.4
Greece	2009	196.6	38.5
Hungary	2009	427.8	114.4
<b>Ireland</b>	<b>2009</b>	<b>224.6</b>	<b>58.4</b>
Italy	2008	163.7	41.1
Latvia	2009	442.6	116.0
Lithuania	2009	490.5	153.4
Luxembourg	2008	157.4	59.1
Malta	2008	230.4	38.0
Netherlands	2009	161.3	40.5
Poland	2009	247.6	84.6
Portugal	2009	167.6	53.7
Romania	2009	433.6	108.8
Slovakia	2009	427.0	84.9
Slovenia	2009	192.6	95.6
Spain	2008	147.0	42.8
Sweden	2009	169.8	48.4
United Kingdom	2009	203.9	50.4
EU 27 Average	2009	208.2	60.9

Source: European Health for All database, WHO Regional Office for Europe, Copenhagen, Denmark, July 2011

Section B: Life Expectancy and Vital Statistics

Figure B24

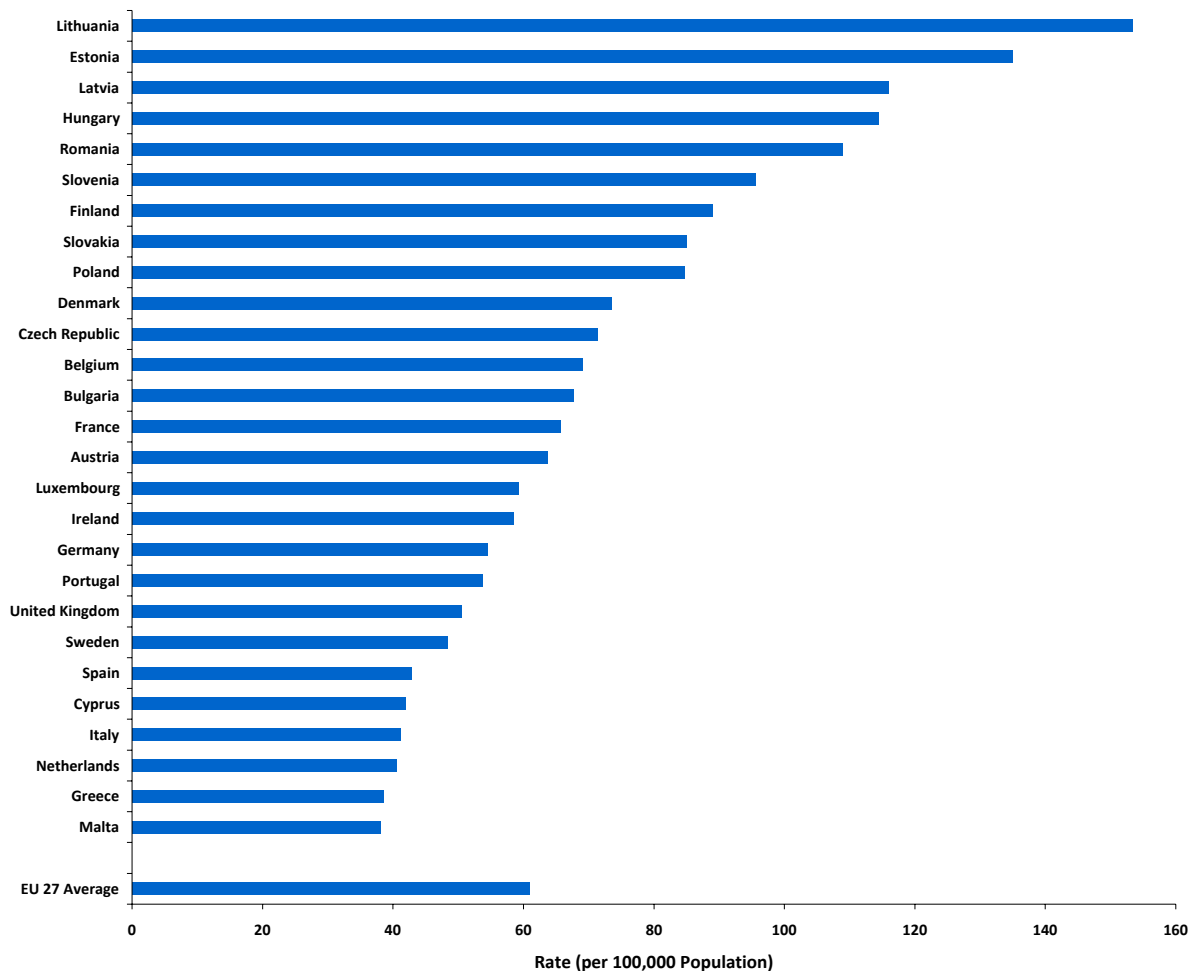
AGE-STANDARDISED MORTALITY RATE PER 100,000 POPULATION FOR SMOKING RELATED CAUSES - EU COUNTRIES, 2009 OR LATEST AVAILABLE YEAR



Source: Table B9

Section B: Life Expectancy and Vital Statistics

Figure B25  
 AGE-STANDARDISED MORTALITY RATE PER 100,000 POPULATION FOR ALCOHOL RELATED CAUSES - EU  
 COUNTRIES, 2009 OR LATEST AVAILABLE YEAR



Source: Table B9

## Infant and Maternal Mortality

Infant mortality rates have steadily declined in recent years. Table B11 gives a breakdown by Regional Authority and Table B12 gives comparisons with other EU countries.

- Definition:**
- \*Infant deaths refer to liveborn infants surviving less than 1 year.
  - \*Neonatal deaths refer to liveborn infants surviving less than 4 weeks.
  - \*Stillbirths prior to 1995 refer to the death of a foetus at or over 28 weeks gestation. From 1995 stillbirths refer to the death of a foetus weighing 500 grams or more or at a gestational age of 24 weeks or more.
  - \*Perinatal deaths refer to stillbirths plus deaths of liveborn infants aged under 1 week.
  - \*Maternal deaths refer to International Classification of Diseases (I.C.D.) 10 detailed list numbers: O00-O99.

**TABLE B10**  
**INFANT, PERINATAL, NEONATAL AND MATERNAL MORTALITY - 1980, 1990, 2000 AND 2010\***

	1980	1990	2000	2010*
<b>Infant Deaths</b>				
Number	821	434	338	279
Infant mortality rate (per 1,000 live births)	11.1	8.2	6.2	3.8
<b>Neonatal Deaths</b>				
Number	498	255	234	188
Neonatal mortality rate (per 1,000 live births)	6.7	4.8	4.3	2.6
<b>Perinatal Deaths</b>				
Number	1,107	543	496b	456#
Perinatal mortality rate (per 1,000 live births and stillbirths)	14.8	10.2	9.0b	6.1#
<b>Maternal Deaths</b>				
Number	5	2	1	3
Maternal mortality rate (per 100,000 live births and stillbirths)	6.7	3.7	1.8	n/a
<b>Stillbirths</b>				
Number	681	327	325b	294#
Stillbirth rate (per 1,000 live births and stillbirths)	9.1	6.1	5.9b	4.0#

\* 2010 Provisional figures based on year of registration.

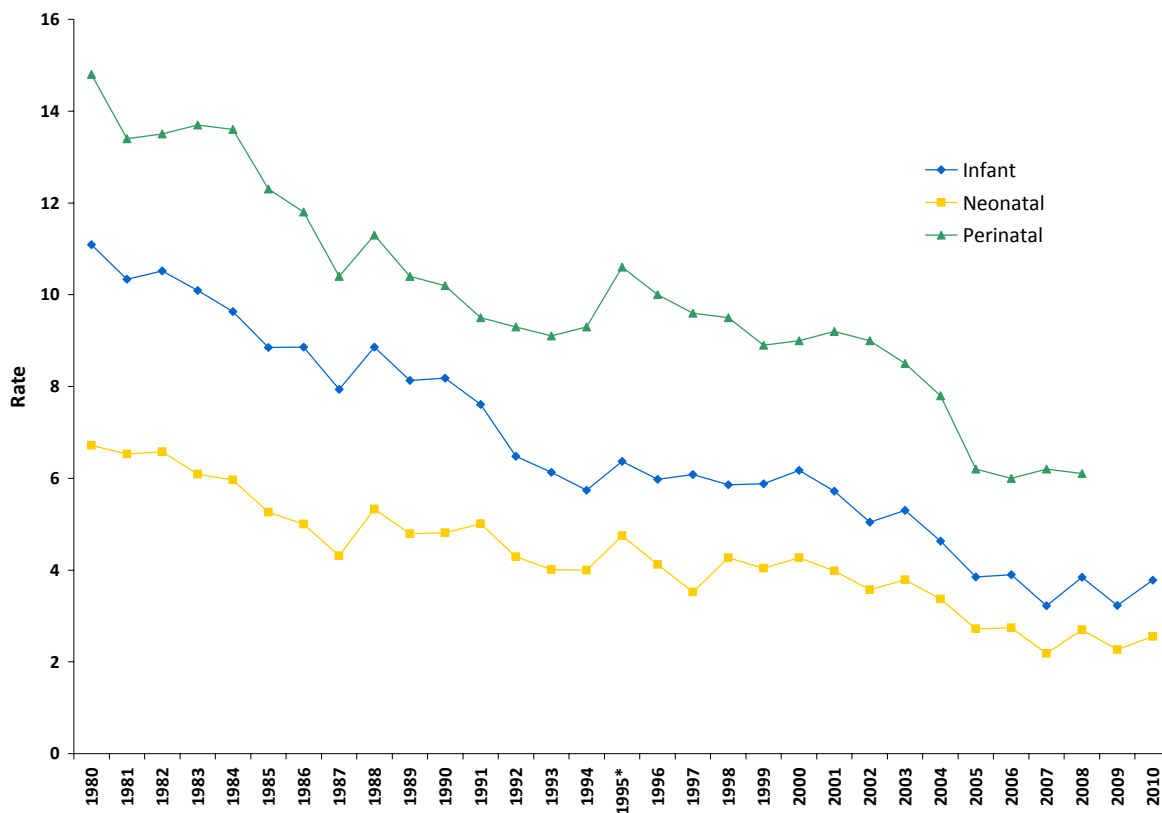
# 2008

b: break in series. Definition of stillbirths changed in 1995 (see definition above).

Source: Central Statistics Office



**Figure B26**  
**INFANT, NEONATAL AND PERINATAL MORTALITY RATES 1980-2010**



\* A break in series occurs in 1995 for perinatal mortality rates. From 1995 the figures relate to the new broader definition of stillbirths at or over 500g or at a gestational age of 24 weeks or more.

2008 is the latest available year for perinatal mortality rates. 2009 and 2010 data are provisional

Infant and Neonatal mortality rates are per 1,000 live births. Perinatal mortality rate is per 1,000 live and still births.

## Section B: Life Expectancy and Vital Statistics

**TABLE B11**  
**NUMBER OF DEATHS AND RATES BY REGIONAL AUTHORITY AREA FOR INFANT AND NEONATAL MORTALITY,**  
**AND FOR PERINATAL AND STILLBIRTHS MORTALITY, 2008**

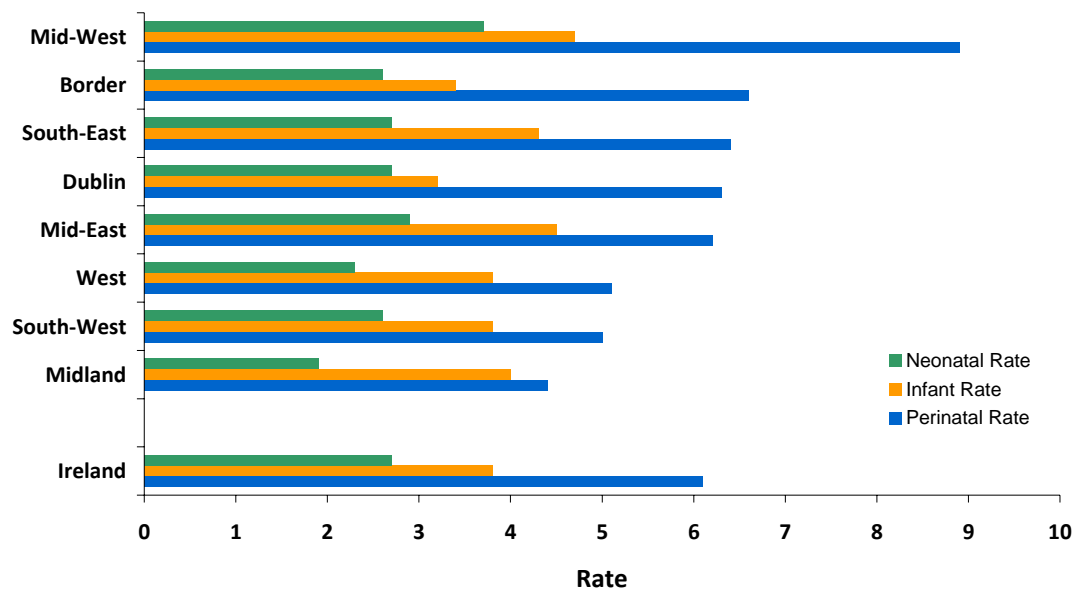
	Border	Midland	West	Dublin	Mid-East	Mid-West	South-East	South-West	Ireland
<b>Infant Deaths</b>									
Number	26	19	26	65	45	29	35	39	284
Infant mortality rate (per 1,000 live births)	3.4	4.0	3.8	3.2	4.5	4.7	4.3	3.8	3.8
<b>Neonatal Deaths</b>									
Number	20	9	16	54	29	23	22	27	200
Neonatal mortality rate (per 1,000 live births)	2.6	1.9	2.3	2.7	2.9	3.7	2.7	2.6	2.7
<b>Perinatal Deaths</b>									
Number	51	21	35	128	62	55	52	52	456
Perinatal mortality rate (per 1,000 live births and stillbirths)	6.6	4.4	5.1	6.3	6.2	8.9	6.4	5.0	6.1
<b>Stillbirths</b>									
Number	33	14	21	80	41	36	34	35	294
Stillbirth rate (per 1,000 live births and stillbirths)	4.2	2.9	3.1	4.0	4.1	5.8	4.2	3.4	4.0

Source: Central Statistics Office.

Note: The rates in some areas are based on small numbers and are therefore subject to considerable fluctuation and caution should be exercised in their interpretation.

Figure B27

Infant, Perinatal and Neonatal Mortality Rates 2008 by Regional Authority



Source: Table B11

Note: The rates in some areas are based on small numbers and are therefore subject to considerable fluctuation and caution should be exercised in their interpretation.

Infant and Neonatal mortality rates are per 1,000 live births. Perinatal mortality rate is per 1,000 live and still births.

**TABLE B12**  
**INFANT AND NEONATAL MORTALITY RATES PER 1,000 LIVE BIRTHS.**  
**PERINATAL MORTALITY RATES PER 1,000 LIVE AND STILL BIRTHS.**  
**FOR EU COUNTRIES 2009 OR LATEST AVAILABLE YEAR**

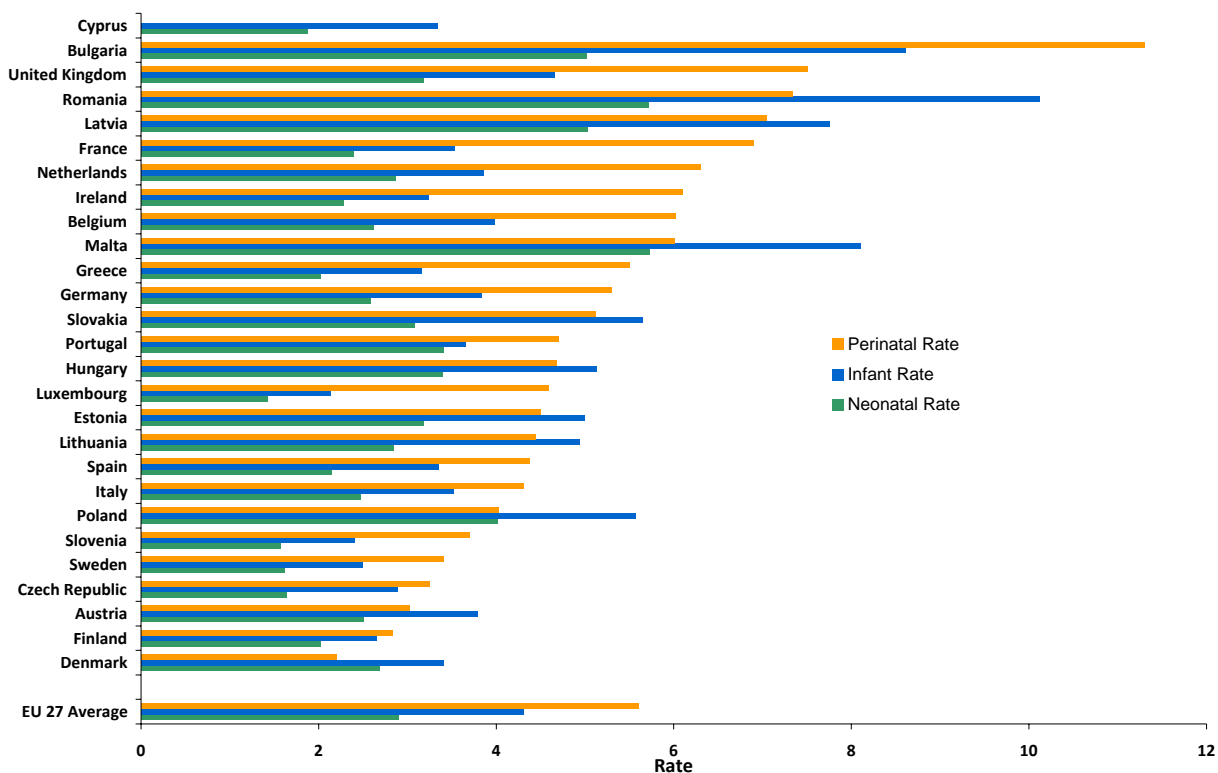
Country	Year	Infant Mortality Rate	Neonatal Mortality Rate	Perinatal Mortality Rate
Austria	2009	3.8	2.5	3.0
Belgium	2005	4.0	2.6	6.0
Bulgaria	2008	8.6	5.0	11.3 (2009)
Cyprus	2009	3.3	1.9	n/a
Czech Republic	2009	2.9	1.6	3.2
Denmark	2006	3.4	2.7	2.2 (2009)
Estonia	2008	5.0	3.2	4.5 (2009)
Finland	2009	2.7	2.0	2.8
France	2008	3.5	2.4	6.9 (2001)
Germany	2006	3.8	2.6	5.3 (2009)
Greece	2009	3.2	2.0	5.5
Hungary	2009	5.1	3.4	4.7
<b>Ireland</b>	<b>2009</b>	<b>3.2</b>	<b>2.3</b>	<b>4.7 (2008)</b>
Italy	2008	3.5	2.5	4.3 (2007)
Latvia	2009	7.8	5.0	7.0
Lithuania	2009	4.9	2.8	4.4
Luxembourg	2008	2.1	1.4	4.6
Malta	2008	8.1	5.7	6.0 (2009)
Netherlands	2009	3.9	2.9	6.3 (2008)
Poland	2009	5.6	4.0	4.0
Portugal	2009	3.7	3.4 (2002)	4.7 (2008)
Romania	2009	10.1	5.7	7.3
Slovakia	2009	5.7	3.1	5.1
Slovenia	2009	2.4	1.6	3.7
Spain	2008	3.4	2.1	4.4
Sweden	2009	2.5	1.6	3.4 (2008)
United Kingdom	2009	4.7	3.2	7.5 (2008)
EU 27 Average	2009	4.3	2.9	5.6

Source: European Health for All database, WHO Regional Office for Europe, Copenhagen , Denmark,

Section B: Life Expectancy and Vital Statistics

Figure B28

INFANT, NEONATAL AND PERINATAL MORTALITY RATES FOR EU COUNTRIES, 2009 OR LATEST AVAILABLE YEAR



Source: Table B12  
 Infant and Neonatal mortality rates are per 1,000 live births. Perinatal mortality rate is per 1,000 live and still births.

**Table B13**  
**LIVE BIRTHS, NUMBER OF SUDDEN INFANT DEATHS**  
**AND SUDDEN DEATH RATES, 1991-2010**

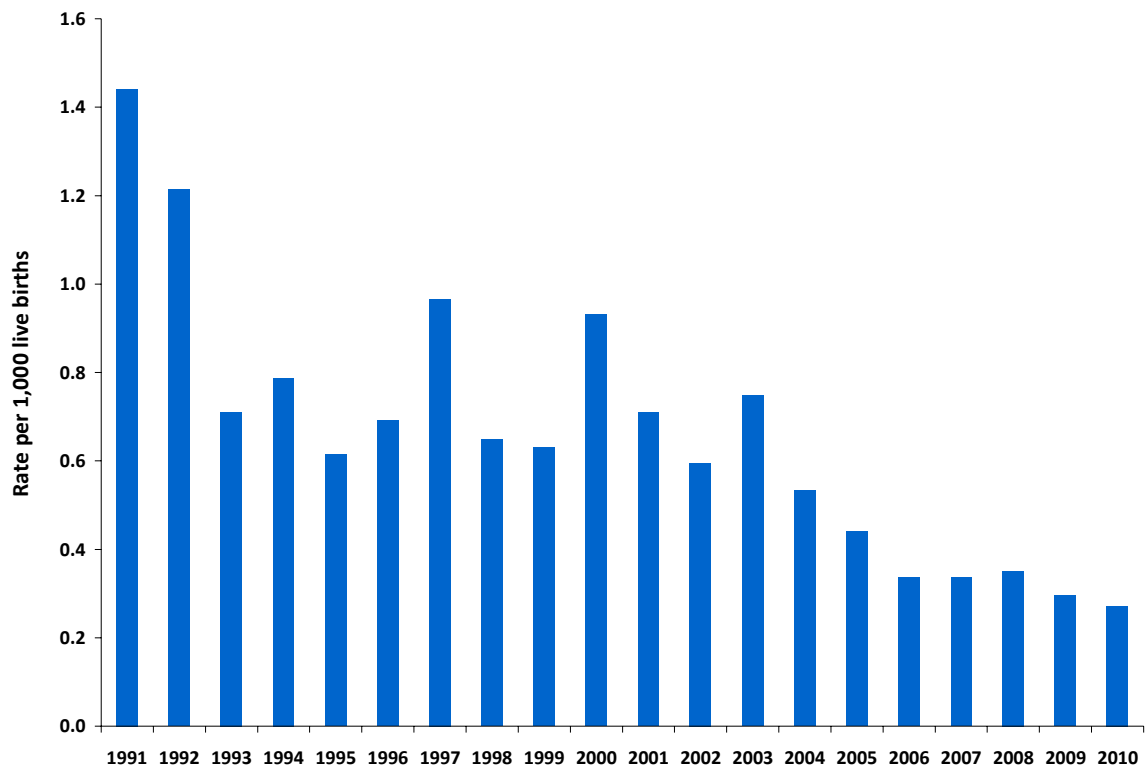
Year	Live Births	Sudden Infant Deaths	
		Number	Rate (per 1,000 live births)
1991	52,718	76	1.4
1992	51,089	62	1.2
1993	49,304	35	0.7
1994	48,255	38	0.8
1995	48,787	30	0.6
1996	50,655	35	0.7
1997	52,775	51	1.0
1998	53,969	35	0.6
1999	53,924	34	0.6
2000	54,789	51	0.9
2001	57,854	41	0.7
2002	60,503	36	0.6
2003	61,529	46	0.7
2004	61,972	33	0.5
2005	61,372	27	0.4
2006	65,425	22	0.3
2007	71,389	24	0.3
2008	73,996	26	0.4
2009*	74,278	22	0.3
2010*	73,724	20	0.3

Source: Central Statistics Office

\* Data provisional for 2009 and 2010.

Note: Refers to deaths caused by Sudden Infant Death Syndrome (ICD9 798.0, ICD10 R95).

**FIGURE B29**  
**SUDDEN INFANT DEATH SYNDROME - MORTALITY RATE PER 1,000 LIVE BIRTHS, IRELAND 1991-2010**



Source: Table B13